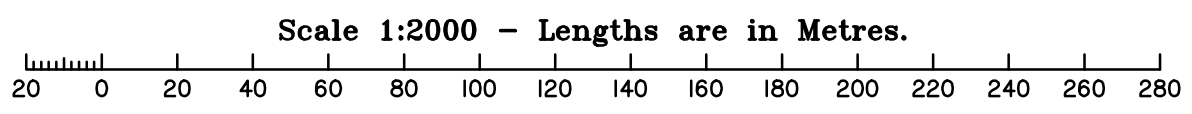


Area of New Road  
6469 m<sup>2</sup>

*For Co-ordinate Table See Sheet 3.*  
*For Reinstatement Report See Sheet 2.*  
*Peg placed at all new corners, unless otherwise stated.*  
*Original information compiled from SP311634 in the Department of Natural Resources, Mines & Energy.*



**DRAFT**  
**21-04-2021**

**Plan of Lots 28-60, 800, Easements A-E in Lots 56-60 respectively and Easement F in Lot 800.**  
Cancelling Lot 800 on SP311634.

LOCAL GOVERNMENT: MORETON BAY REGIONAL COUNCIL  
LOCALITY: D'AGUILAR  
Meridian: MGA Zone 56 Wide SP311634

Survey Records: Mo

Scale: 1:2000  
Format: STANDARD  
SP311637

0 50m 100m 150m State copyright reserved.

**WARNING : Folded or Mutilated Plans will not be accepted.  
Plans may be rolled.  
Information may not be placed in the outer margins.**

(Dealing No.)

4. Lodged by

(Include address, phone number, reference, and Lodger Code)

| I. Existing     |                     | Created     |        |                     |
|-----------------|---------------------|-------------|--------|---------------------|
| Title Reference | Description         | New Lots    | Road   | Secondary Interests |
| xxxxxxxxx       | Lot 800 on SP311634 | 28-60 & 800 | New Rd | Emts A-F            |

**REINSTATEMENT REPORT:**

- Search consisted of IS262216 and SP311634.
- Boundaries are fixed by original reference marks at stations 1-2, 7a, 8, 17, 19-20, and 31.
- All dimensions agree with IS262216 and SP311634.

Note: Emt xxxxxxxx (Emt L on SP311634) is to be surrendered prior to lodgement of this plan.

**PRELIMINARY  
21-04-2021**

|              |                             |
|--------------|-----------------------------|
| 28-60<br>800 | Por 14V<br>Por14V & Por 482 |
| Lots         | Orig                        |

2. Orig Grant Allocation :

3. References :

Dept File :  
Local Govt :  
Surveyor : M2584-ST2

5. Passed & Endorsed :

By: JFP URBAN CONSULTANTS PTY LTD  
ACN 050 414 045  
Date :  
Signed :  
Designation : Cadastral Surveyor

**6. Building Format Plans only.**

I certify that :

- \* As far as it is practical to determine, no part of the building shown on this plan encroaches onto adjoining lots or road;
- \* Part of the building shown on this plan encroaches onto adjoining \* lots and road

.....  
Cadastral Surveyor/Director\* Date

\*delete words not required

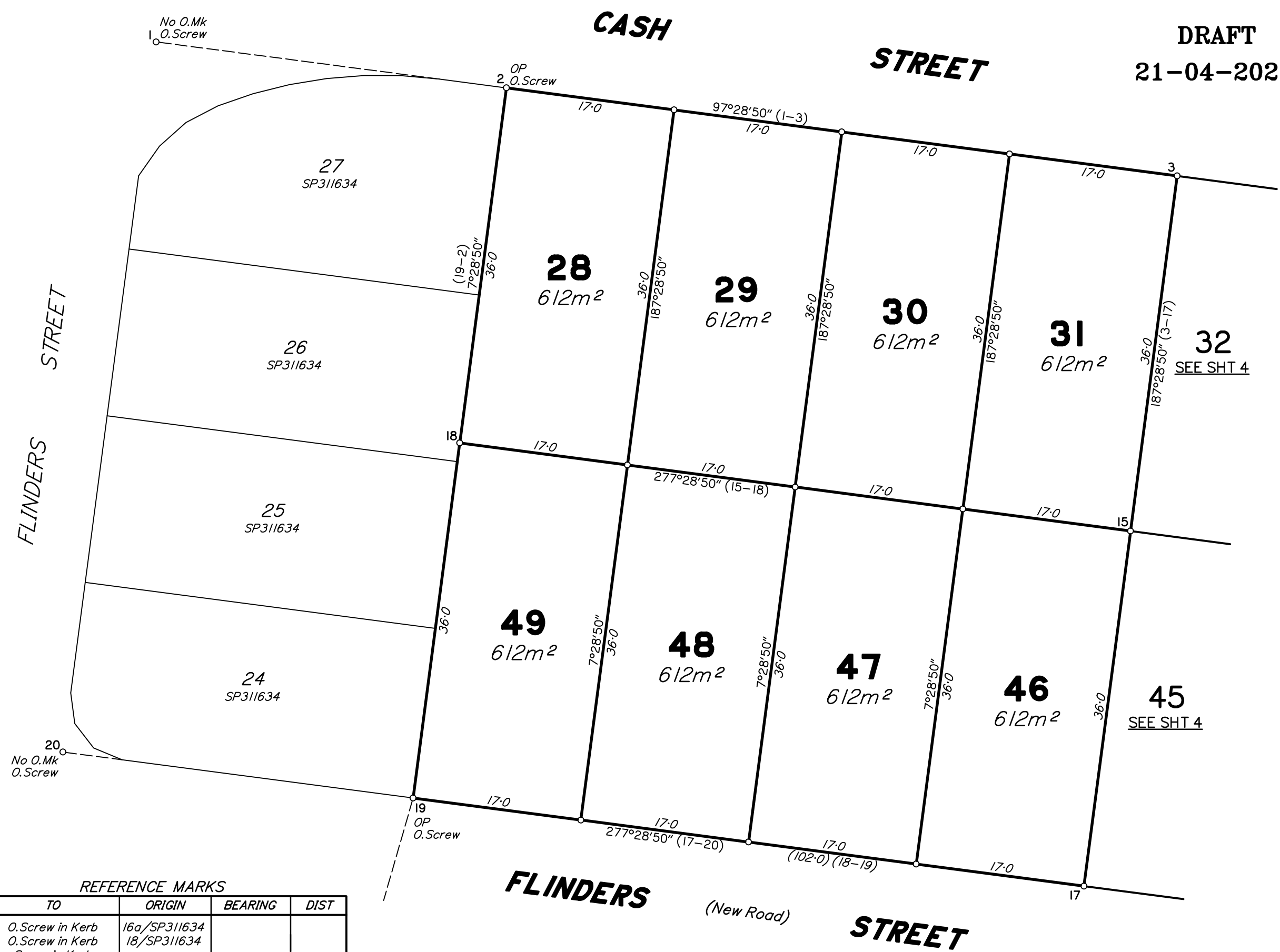
**7. Lodgement Fees :**

|                 |          |
|-----------------|----------|
| Survey Deposit  | \$ ..... |
| Lodgement       | \$ ..... |
| .....New Titles | \$ ..... |
| Photocopy       | \$ ..... |
| Postage         | \$ ..... |
| TOTAL           | \$ ..... |

8. Insert  
Plan  
Number

**SP311637**

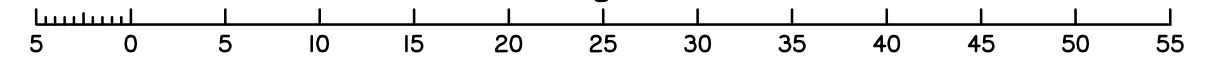
**DRAFT**  
**21-04-2021**



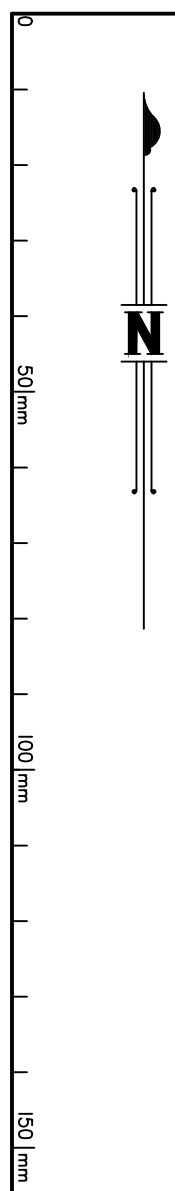
**REFERENCE MARKS**

| STN | TO              | ORIGIN       | BEARING | DIST |
|-----|-----------------|--------------|---------|------|
| 1   | O.Screw in Kerb | 16a/SP311634 |         |      |
| 2   | O.Screw in Kerb | 18/SP311634  |         |      |
| 3   | Screw in Kerb   |              |         |      |
| 17  | Screw in Kerb   |              |         |      |
| 19  | O.Screw in Kerb | 19/SP311634  |         |      |
| 20  | O.Screw in Kerb | 21/SP311634  |         |      |

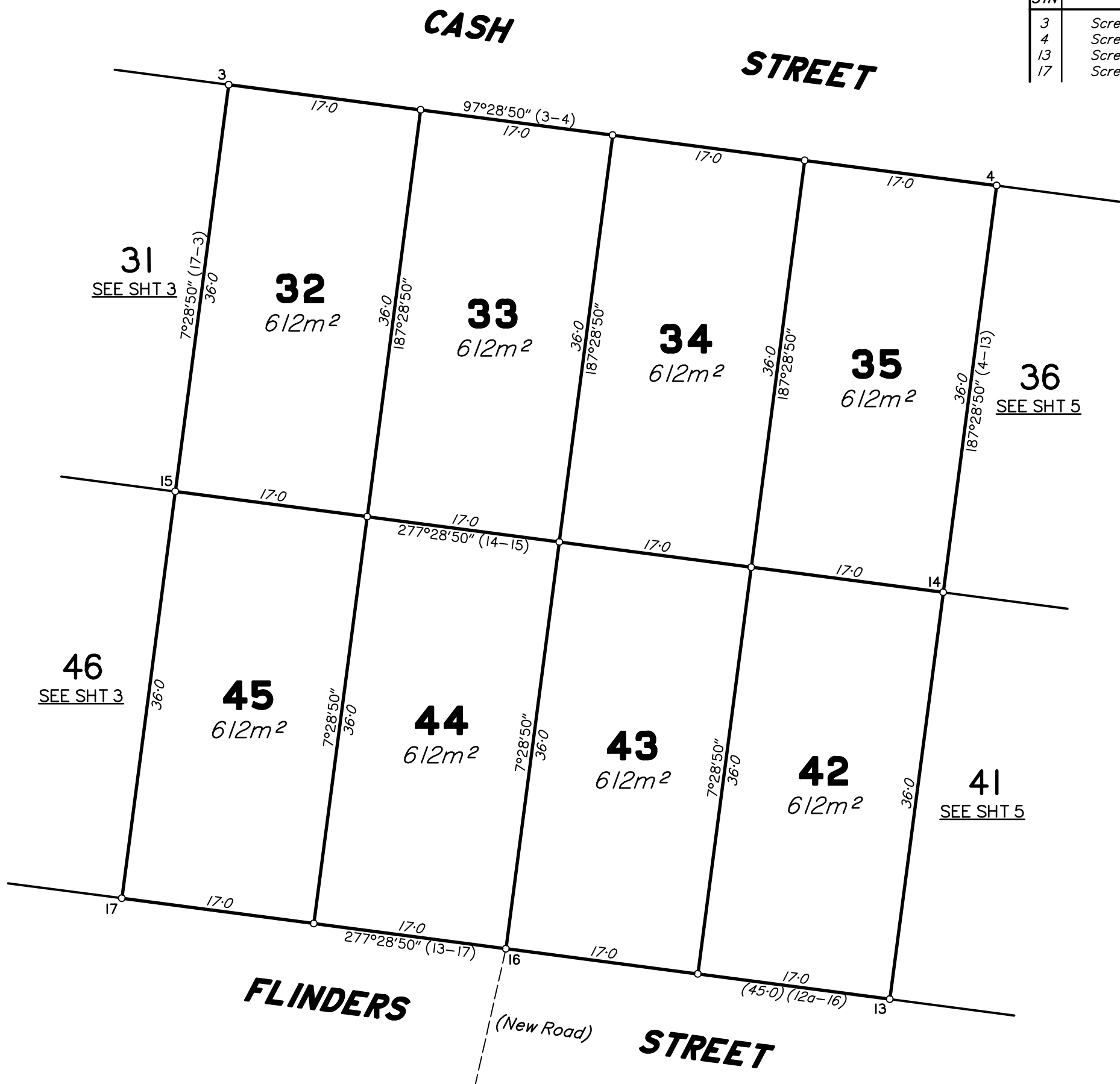
Scale 1:400 - Lengths are in Metres.



Insert  
Plan  
Number  
**SP311637**  
State copyright reserved.



| REFERENCE MARKS |               |        |         |      |
|-----------------|---------------|--------|---------|------|
| STN             | TO            | ORIGIN | BEARING | DIST |
| 3               | Screw in Kerb |        |         |      |
| 4               | Screw in Kerb |        |         |      |
| 13              | Screw in Kerb |        |         |      |
| 17              | Screw in Kerb |        |         |      |



31  
SEE SHT 3

32  
612m<sup>2</sup>

33  
612m<sup>2</sup>

34  
612m<sup>2</sup>

35  
612m<sup>2</sup>

36  
SEE SHT 5

46  
SEE SHT 3

45  
612m<sup>2</sup>

44  
612m<sup>2</sup>

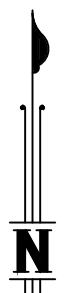
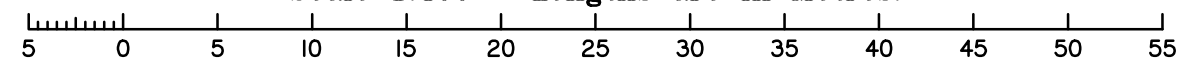
43  
612m<sup>2</sup>

42  
612m<sup>2</sup>

41  
SEE SHT 5

DRAFT  
21-04-2021

Scale 1:400 - Lengths are in Metres.



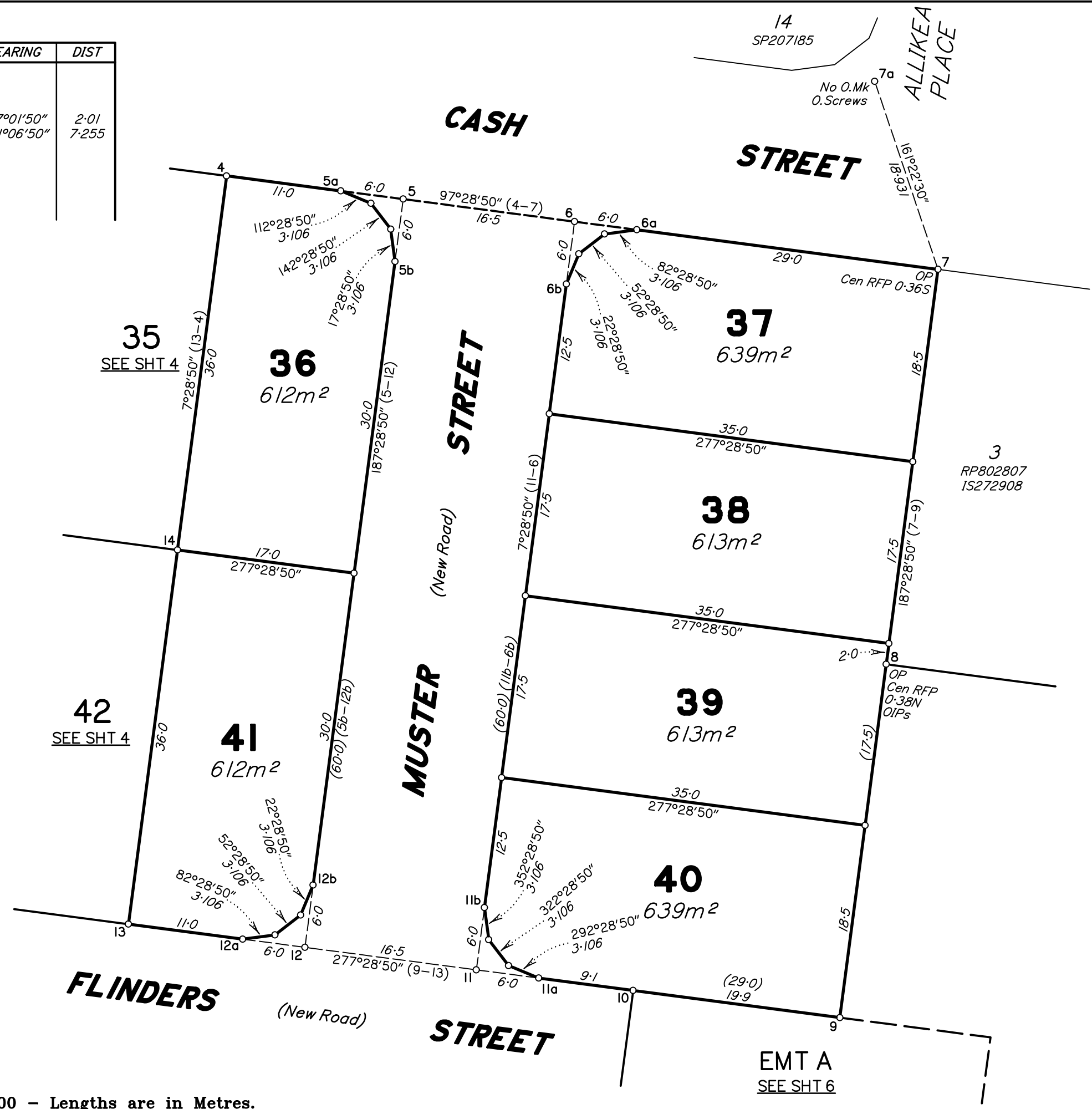
0  
50 mm  
100 mm  
150 mm

Insert  
Plan  
Number  
**SP311637**  
State copyright reserved.



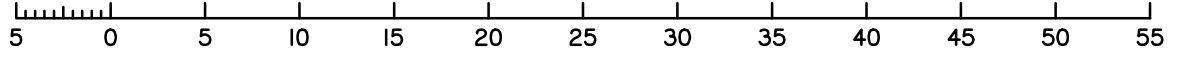
| REFERENCE MARKS |                 |             |            |       |
|-----------------|-----------------|-------------|------------|-------|
| STN             | TO              | ORIGIN      | BEARING    | DIST  |
| 4               | Screw in Kerb   |             |            |       |
| 6               | Screw in Kerb   |             |            |       |
| 7               | Screw in Kerb   |             |            |       |
| 7a              | O.Screw in Kerb | 38/SP207185 | 157°01'50" | 2.01  |
| 7a              | O.Screw in Kerb | 38/SP207185 | 241°06'50" | 7.255 |
| 9               | Pin             |             |            |       |
| 11              | Screw in Kerb   |             |            |       |
| 12              | Screw in Kerb   |             |            |       |

**DRAFT**  
**21-04-2021**



Insert Plan Number  
**SP311637**  
State copyright reserved.

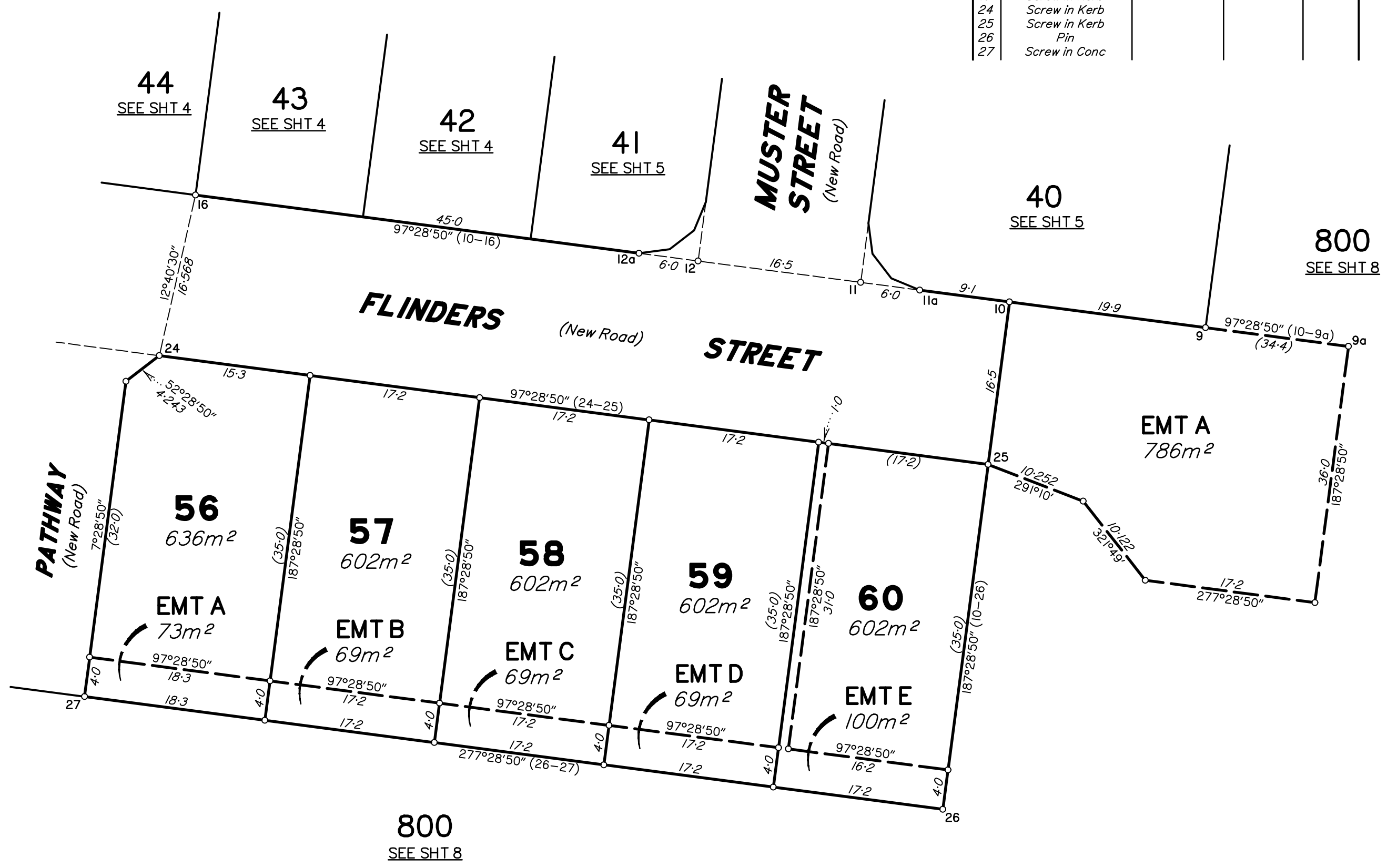
Scale 1:400 - Lengths are in Metres.





| REFERENCE MARKS |               |        |         |      |
|-----------------|---------------|--------|---------|------|
| STN             | TO            | ORIGIN | BEARING | DIST |
| 9               | Pin           |        |         |      |
| 11              | Screw in Kerb |        |         |      |
| 12              | Screw in Kerb |        |         |      |
| 16              | Screw in Kerb |        |         |      |
| 24              | Screw in Kerb |        |         |      |
| 25              | Screw in Kerb |        |         |      |
| 26              | Pin           |        |         |      |
| 27              | Screw in Conc |        |         |      |

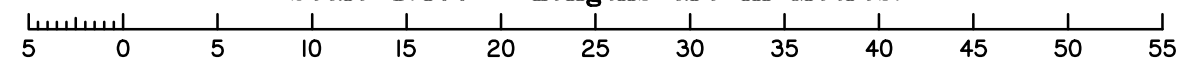
**DRAFT**  
**21-04-2021**

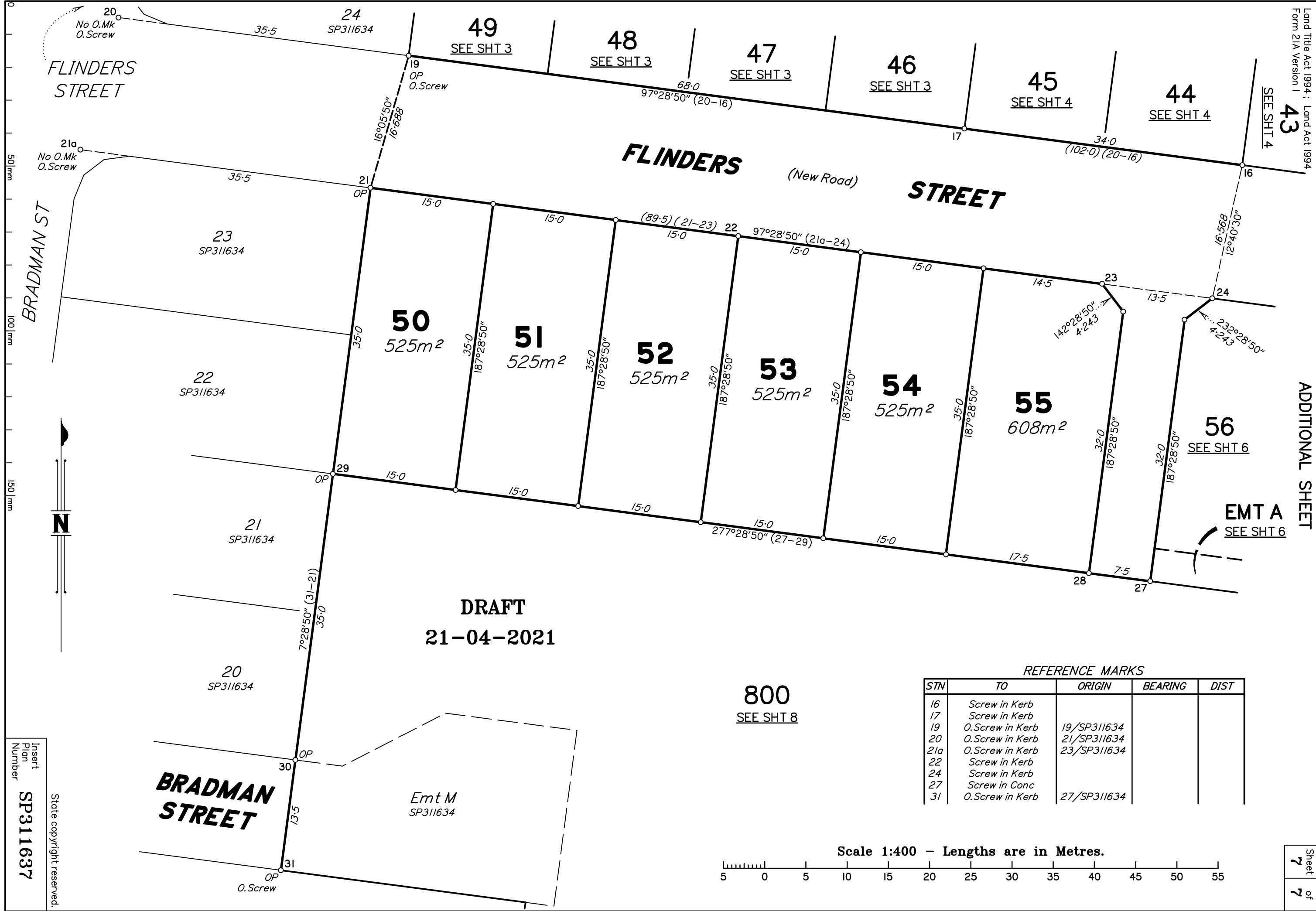


50mm  
100mm  
150mm

Insert  
Plan  
Number  
**SP311637**  
State copyright reserved.

Scale 1:400 - Lengths are in Metres.





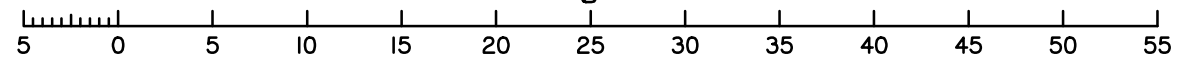
**DRAFT**  
**21-04-2021**

**800**  
**SEE SHT 8**

**REFERENCE MARKS**

| STN | TO              | ORIGIN      | BEARING | DIST |
|-----|-----------------|-------------|---------|------|
| 16  | Screw in Kerb   |             |         |      |
| 17  | Screw in Kerb   |             |         |      |
| 19  | O.Screw in Kerb | 19/SP311634 |         |      |
| 20  | O.Screw in Kerb | 21/SP311634 |         |      |
| 21a | O.Screw in Kerb | 23/SP311634 |         |      |
| 22  | Screw in Kerb   |             |         |      |
| 24  | Screw in Kerb   |             |         |      |
| 27  | Screw in Conc   |             |         |      |
| 31  | O.Screw in Kerb | 27/SP311634 |         |      |

Scale 1:400 - Lengths are in Metres.



Insert Plan Number  
**SP311637**

State copyright reserved.