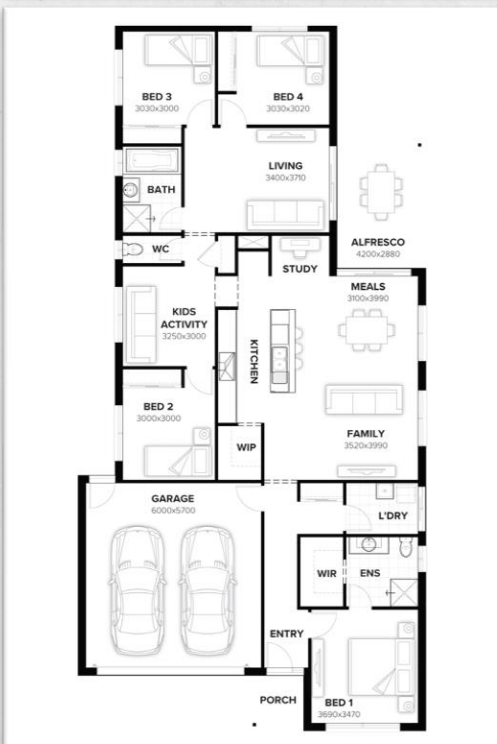




<b>Builder</b>	<b>Burbank Homes</b>		<b>Lot No</b>	54	<b>Price</b>	<b>\$472,378*</b>
<b>Lot</b>	525m2	<b>House</b>	Balmoral 220 220 sqm	<b>Summary</b>	<b>4 BED, 2 BATH, 2 CAR</b>	



## Inclusions

- 90mm timber frames on all Burbank Homes
- Allowances for all site costs (H1 slab and piling)
- Full carpet and tiles LED lighting
- Stone benchtops and overheads to Kitchen
- Letterbox; NBN Ready; Council Fees all included
- Driveway;
- Upgraded facade and more inclusions!

### Builder Disclaimer:

\*Burbank reserves the right to alter any price without notice. Subject to developer design approval. Conditions apply. All photos and illustrations are representative only. Images may contain internal or external upgrade items like feature renders and timber look garage doors, or items not supplied by Burbank, which include furniture, landscaping, decking, fencing and external lighting. All designs are the property of Burbank and must not be used, reproduced, copied or varied, wholly or in part without written permission from an authorized Burbank representative. Copyright. Burbank Australia (QLD) Pty Ltd. ABN 77 102 014 615. Subject to Burbank's preferred sitting. QBCC number 1046544 Printed On: 23/06/2021 Created On: 23/06/2021

### Developer Disclaimer:

This brochure is not a contract and is not binding. The information it contains does not constitute investment, legal, business, tax or other advice and has been prepared without reference to the investment objectives, financial situation, tax position or particular needs of any person. You should consult your professional adviser for legal, business or tax advice. Photos, maps, plans, drawings and descriptions are for illustration only and may differ from final built forms. While all reasonable care has been taken to ensure accuracy on publication, the information published may change from time to time to reflect changing circumstances, laws and regulations and without notice. Your contract of sale will set out all binding terms and up-to-date information. Prospective buyers should make and rely on their own enquiries and seek independent legal and financial advice before entering into any binding obligations. To the full extent permitted by law all liability is expressly excluded whether in negligence or otherwise, for any loss or damage in respect of, or arising from reliance on, this document.  
DFC (Project Management) Pty Ltd ABN 83 161 448 139 is project manager for the Archer's Way estate.