

LEGEND:

- EXISTING CONTOURS
- PROPOSED STORMWATER DRAINAGE
- SILT FENCE
- DIVERSION BUND/DRAIN
- SAND BAGS
- ROCK FILTER CHECK DAM
- GRASS FILTER STRIPS
- EXTENT OF EARTHWORKS
- TRUCK SHAKEDOWN AND WASH DOWN AREA
- TREE LEGEND
  - TREES TO BE RETAINED AND PROTECTED
  - TREES TO BE RETAINED AND REQUIRING SUPERVISION BY ARBORIST ON SITE DUE TO SERVICES OR EARTHWORKS
  - NATIVE TREES/EXOTIC/WEED SPECIES FOR REMOVAL

ALL FOOTPATHS ARE TO BE FULLY TURFED AS SOON AS PRACTICAL

THE CONTRACTOR IS TO NOTIFY THE SUPERVISING ENGINEER OF ANY DISCREPANCIES BETWEEN THE DESIGN PLANS AND THE CONDITIONS ON SITE PRIOR TO COMMENCEMENT OF ANY PIPE LAYING.

FOR NOTES AND SEDIMENT MANAGEMENT DEVICES REFER TO DWG No. M2584E\_3 ES04

SILT & EROSION CONTROL - BULK EARTHWORKS PHASE

THE VARIOUS SILT CONTROL METHODS USED DURING CONSTRUCTION SHALL BE DETERMINED ON SITE, PRIOR TO COMMENCEMENT OF WORKS BY THE SUPERVISING ENGINEER, PRINCIPLE CONTRACTOR AND COUNCIL'S STORMWATER MANAGEMENT OFFICER - EROSION & SEDIMENT CONTROL.

NO LAND DISTURBING ACTIVITIES ON THE SITE SHALL OCCUR UNTIL ALL PERIMETER ESC MEASURES, SEDIMENT BASINS AND ASSOCIATED TEMPORARY DRAINAGE CONTROLS HAVE BEEN CONSTRUCTED IN ACCORDANCE WITH COUNCIL'S REQUIREMENTS.

THE FOLLOWING PROGRAM SHALL BE USED AS A GENERAL GUIDE.

- A. VEHICLE SITE ENTRY/EXIT POINT (TRUCK SHAKEDOWN DEVICE AND WASH DOWN AREA) IS TO BE CONSTRUCTED.
- B. SEDIMENT BASIN(S) & CATCH DRAINS TO BE CONSTRUCTED AND WATER QUALITY MONITORING COMMENCED.
- C. SILT FENCES ARE TO BE ERECTED.
- D. TOP SOIL IS TO BE STRIPPED & BULK EARTHWORKS IS TO COMMENCE.
- E. SITE STABILISATION, SITE & WATER QUALITY MONITORING COMPLIANCE PROGRAM COMMENCED AND MAINTAINED UNTIL ALL DISTURBED AREAS HAVE BEEN ADEQUATELY STABILISED AGAINST EROSION TO THE ACCEPTANCE OF COUNCIL..

FOR CONTINUATION REFER ABOVE RIGHT

FOR CONTINUATION REFER BELOW LEFT

**JFOP**  
URBAN CONSULTANTS

BRISBANE - SUNSHINE COAST - CENTRAL QLD

BRISBANE  
JFP House - 76 Ernest Street,  
South Brisbane Qld 4101  
P 07 3012 0100 W www.jfp.com.au

JFP URBAN CONSULTANTS PTY. LTD. A.C.N. 050 414 045

PLANNERS

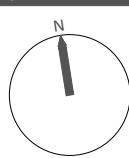
URBAN DESIGNERS

SURVEYORS

ENGINEERS

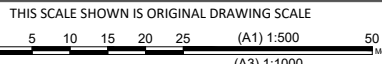
LANDSCAPE ARCHITECTS

NORTH:



SCALE:

1:500  
A1



APPROVED	DESIGNED	CDV
FOR AND ON BEHALF OF JFP URBAN CONSULTANTS PTY LTD	DATE: 24/09/21	INIT: CDV

ISSUE:

ISSUE FOR OPERATIONAL WORKS APPROVAL
DATE: 24/09/21
INIT: CDV

TITLE:

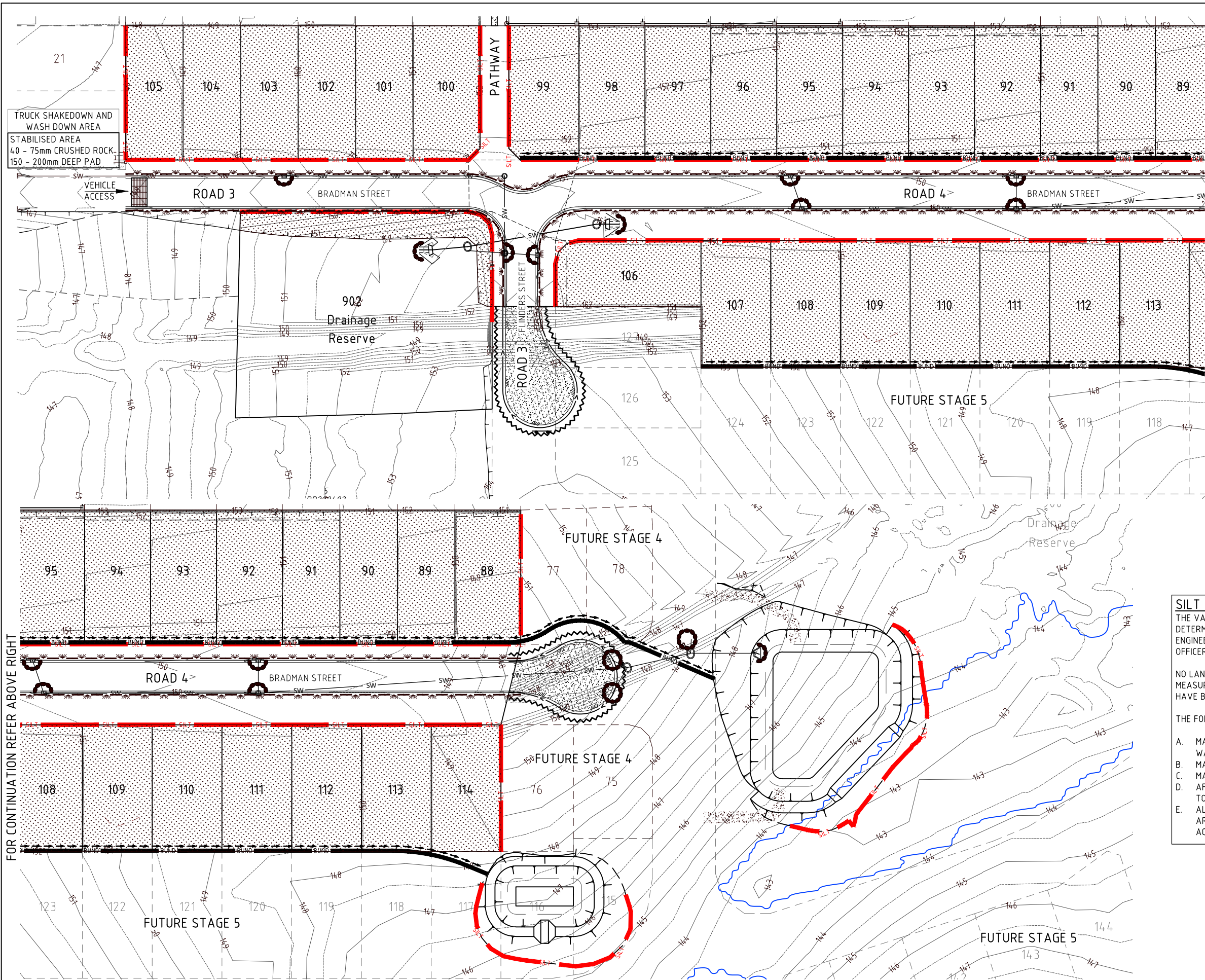
EROSION AND SEDIMENT CONTROL LAYOUT  
BULK EARTHWORKS PHASE  
DFC (PROJECT MANAGEMENT PTY LTD)  
'ARCHERS WAY' ESTATE - STAGE 3  
AT 22-80 CASH STREET, D'AGUILAR



DETAILS:

JOB NO: M2584E\_3  
PLAN: ES01  
ISSUE: A  
MORETON BAY REGIONAL COUNCIL REF: DA/38032/2019/V3VR  
FILE NAME: EROSION.DWG





**LEGEND:**

- FINISHED CONTOURS
- PROPOSED STORMWATER DRAINAGE
- SILT FENCE
- DIVERSION BUND/DRAIN
- SAND BAGS
- ROCK FILTER CHECK DAM
- GRASS FILTER STRIPS

TRUCK SHAKEDOWN AND WASH DOWN AREA

LOTS & DISTURBED AREAS TO BE TOPSOILED & GRASS SEED

FOOTPATHS & BATTERS TO BE FULLY TURFED

**TREE LEGEND**

- TREES TO BE RETAINED AND PROTECTED
- TREES TO BE RETAINED AND REQUIRING SUPERVISION BY ARBORIST ON SITE DUE TO SERVICES OR EARTHWORKS
- NATIVE TREES/EXOTIC/WEED SPECIES FOR REMOVAL

ALL FOOTPATHS ARE TO BE FULLY TURFED AS SOON AS PRACTICAL

THE CONTRACTOR IS TO NOTIFY THE SUPERVISING ENGINEER OF ANY DISCREPANCIES BETWEEN THE DESIGN PLANS AND THE CONDITIONS ON SITE PRIOR TO COMMENCEMENT OF ANY PIPE LAYING.

FOR NOTES AND SEDIMENT MANAGEMENT DEVICES REFER TO DWG No. M2584E\_3ES04

**SILT & EROSION CONTROL - ROADS & DRAINAGE PHASE**

THE VARIOUS SILT CONTROL METHODS USED DURING CONSTRUCTION SHALL BE DETERMINED ON SITE, PRIOR TO COMMENCEMENT OF WORKS BY THE SUPERVISING ENGINEER, PRINCIPLE CONTRACTOR AND COUNCIL'S STORMWATER MANAGEMENT OFFICER - EROSION & SEDIMENT CONTROL.

NO LAND DISTURBING ACTIVITIES ON THE SITE SHALL OCCUR UNTIL ALL PERIMETER ESC MEASURES, SEDIMENT BASINS AND ASSOCIATED TEMPORARY DRAINAGE CONTROLS HAVE BEEN CONSTRUCTED IN ACCORDANCE WITH COUNCIL'S REQUIREMENTS.

THE FOLLOWING PROGRAM SHALL BE USED AS A GENERAL GUIDE.

- MAINTAIN VEHICLE SITE ENTRY/EXIT POINT (TRUCK SHAKEDOWN DEVICE AND WASH DOWN AREA)
- MAINTAIN SEDIMENT BASIN(S) & CATCH DRAINS.
- MAINTAIN ALL SILT FENCES. ERECT ADDITIONAL SILT FENCES IF REQUIRED.
- AFTER BULK EARTHWORKS HAS BEEN 100% COMPLETED SITE STABILISATION IS TO BE COMMENCED.
- ALL PROTECTION MEASURES ARE TO BE MAINTAINED UNTIL ALL DISTURBED AREAS HAVE BEEN ADEQUATELY STABILISED AGAINST EROSION TO THE ACCEPTANCE OF COUNCIL.

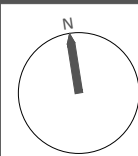
FOR CONTINUATION REFER ABOVE RIGHT

FOR CONTINUATION REFER BELOW LEFT

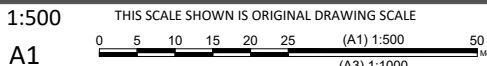
**JFOP**  
BRISBANE - SUNSHINE COAST - CENTRAL QLD  
BRISBANE  
JFP House - 76 Ernest Street,  
South Brisbane Qld 4101  
P 07 3012 0100 W www.jfp.com.au  
JFP URBAN CONSULTANTS PTY. LTD. A.C.N. 050 414 045

PLANNERS  
URBAN DESIGNERS  
SURVEYORS  
ENGINEERS  
LANDSCAPE ARCHITECTS

NORTH:



SCALE:



DO NOT SCALE FROM THIS DRAWING - USE ONLY DIMENSIONS PROVIDED - IF IN DOUBT PLEASE ENQUIRE

APPROVED	T. MCKINNEY RPEQ 5087	A. FRASER RPEQ 5691	J. PAPPAS RPEQ 6086	DESIGNED CDV	CDV
CHECKED	S. MARSH RPEQ 8068	H. WATSON RPEQ 6200	PNH	DATUM: AHD	ISSUE: A

FOR AND ON BEHALF OF JFP URBAN CONSULTANTS PTY LTD

ISSUE:

ISSUE FOR OPERATIONAL WORKS APPROVAL

DATE: 24/09/21

CDV

INIT:

TITLE:

**EROSION AND SEDIMENT CONTROL LAYOUT  
ROADS & DRAINAGE PHASE**

DFC (PROJECT MANAGEMENT PTY LTD)

'ARCHERS WAY' ESTATE - STAGE 3  
AT 22-80 CASH STREET, D'AGUILAR

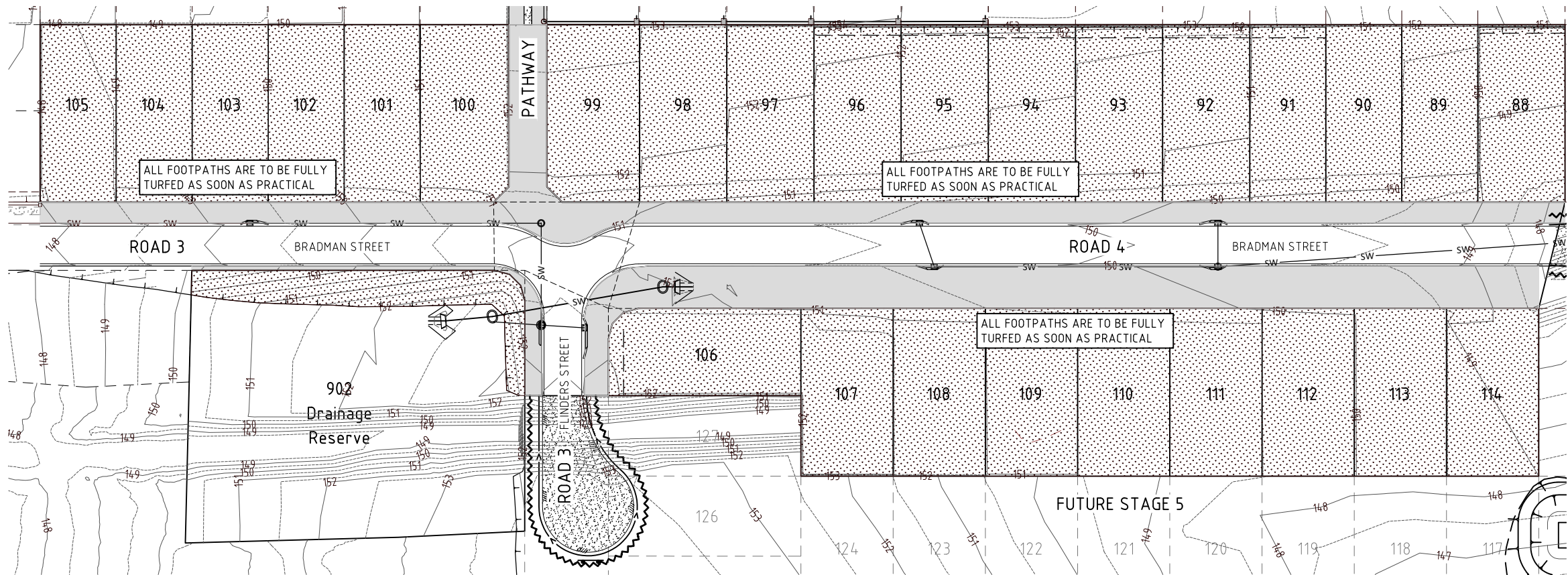


DETAILS:

JOB NO: M2584E\_3  
PLAN: ES02  
ISSUE: A

MORETON BAY REGIONAL COUNCIL REF: DA/38032/2019/V3VR  
FILE NAME: EROSION.DWG





**LEGEND:**

FINISHED CONTOURS

PROPOSED STORMWATER DRAINAGE

SILT FENCE

EARTH BUND WALL

SAND BAGS

ROCK FILTER CHECK DAM

AREA TO BE TOPSOILED AND GRASS SEED

AREA TO BE FULLY TURFED

CATCH DRAIN

**TREE LEGEND**

TREES TO BE RETAINED AND PROTECTED

TREES TO BE RETAINED AND REQUIRES THE SUPERVISION OF ANY EXCAVATION OR SERVICES WORKS WITHIN THE HATCHED PROTECTION ZONE BY AN ARBORIST ON SITE.

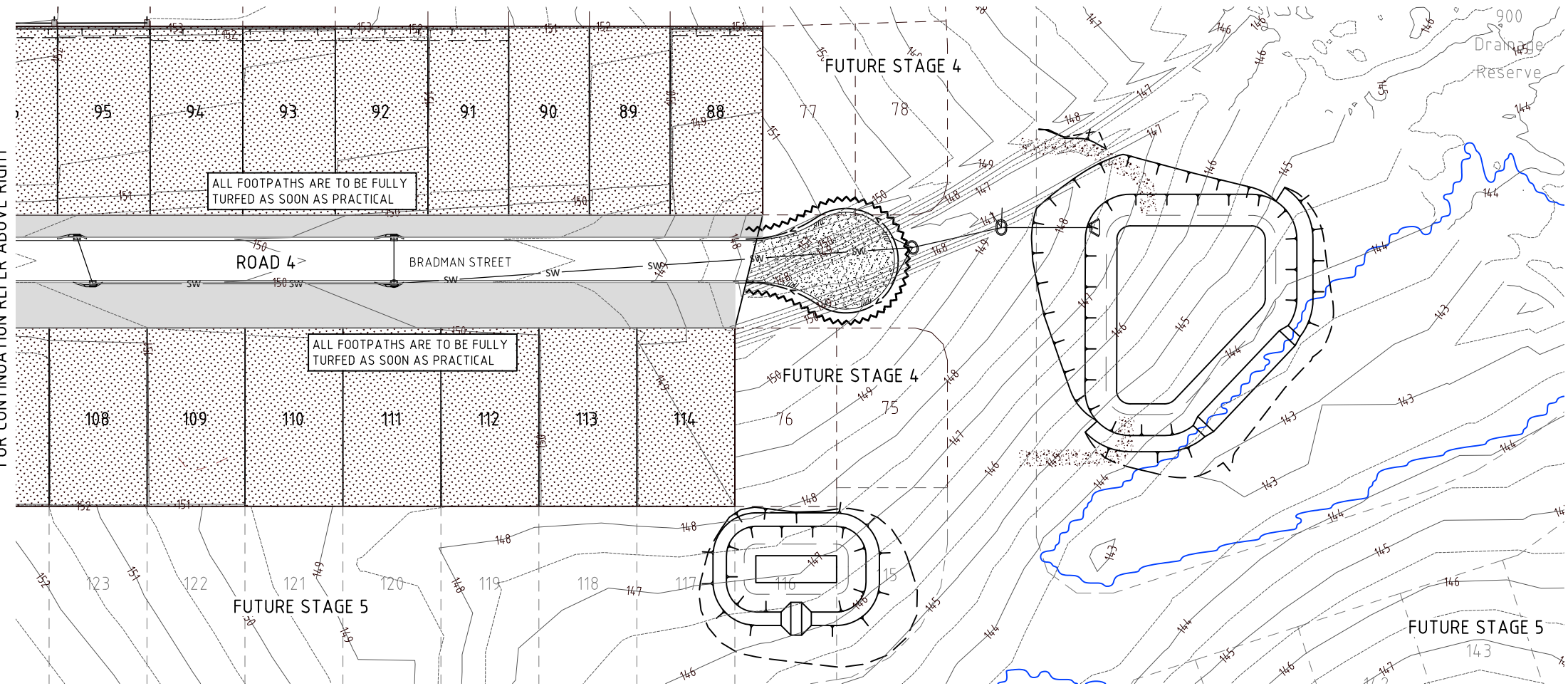
**TPZ**  
Tree Protection Zone  
All vegetation to be protected in accordance with AS4970 - Protection of Trees on Development Sites & any conditions of approval.

PRIOR TO COMMENCEMENT OF WORKS REFER TO VEGETATION MANAGEMENT PLAN, REHABILITATION PLAN AND LANDSCAPE ARCHITECTS PLANS

FOR NOTES AND SEDIMENT MANAGEMENT DEVICES REFER TO DWG No. M2584E\_3 ES04

**SILT & EROSION CONTROL - PRACTICAL COMPLETION PHASE**

- THE FOLLOWING PROGRAM SHALL BE USED AS A GENERAL GUIDE.
- A. ALL EXPOSED AREAS ARE TO BE STABILISED AS SOON AS PRACTICAL WITH A MINIMUM OF 80% OF THE NOMINATED GRASS COVER TO BE ACHIEVED WITHIN 30 DAYS OF COMPLETION OF WORK
  - B. MAINTAIN ALL SILT FENCES. ERECT ADDITIONAL SILT FENCES IF REQUIRED.
  - C. BUND WALLS, SILT FENCES AND GULLY PROTECTION MEASURES ARE TO REMAIN UNTIL 80% OF GRASS COVER IS ACHIEVED TO NOMINATED AREAS.
  - E. ONCE 80% OF NOMINATED GRASS COVER HAS BEEN ACHIEVED (AND CONFIRMED WITH SUPERVISING ENGINEER & COUNCIL'S STORMWATER MANAGEMENT OFFICER-EROSION & SEDIMENT CONTROL), ANY REMAINING TEMPORARY BUND WALLS, SILT FENCES TO GRASS PROTECTED LOTS, GULLY PROTECTION AND TEMPORARY SEDIMENT BASINS ARE TO BE REMOVED.



FOR CONTINUATION REFER ABOVE RIGHT

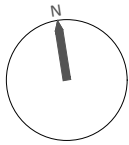
FOR CONTINUATION REFER BELOW LEFT



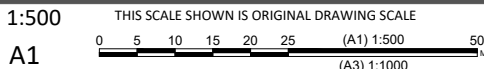
BRISBANE - SUNSHINE COAST - CENTRAL QLD  
BRISBANE  
JFP House - 76 Ernest Street,  
South Brisbane Qld 4101  
P 07 3012 0100 W www.jfp.com.au  
JFP URBAN CONSULTANTS PTY. LTD. A.C.N. 050 414 045

PLANNERS  
URBAN DESIGNERS  
SURVEYORS  
ENGINEERS  
LANDSCAPE ARCHITECTS

NORTH:



SCALE:



APPROVED	DESIGNED	CDV
T. McKINNEY RPEQ 5087	A. FRASER RPEQ 5691	J. PAPPAS RPEQ 6086
S. MARSH RPEQ 8068	H. WATSON RPEQ 6200	
FOR AND ON BEHALF OF JFP URBAN CONSULTANTS PTY LTD	CHECKED	PNH
	DATUM: AHD	ISSUE: A

ISSUE:

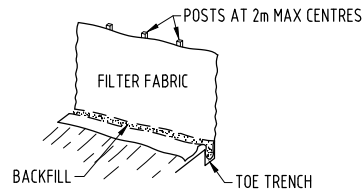
ISSUE FOR OPERATIONAL WORKS APPROVAL  
DATE: 24/09/21  
INIT: CDV

TITLE:

EROSION AND SEDIMENT CONTROL LAYOUT  
PRACTICAL COMPLETION PHASE  
DFC (PROJECT MANAGEMENT PTY LTD)  
'ARCHERS WAY' ESTATE - STAGE 3  
AT 22-80 CASH STREET, D'AGUILAR



DETAILS:  
JOB NO: M2584E\_3  
PLAN: ES03  
ISSUE: A  
MORETON BAY REGIONAL COUNCIL REF: DA/38032/2019/V3VR  
FILE NAME: EROSION.DWG



**SILT FENCE**  
N.T.S.

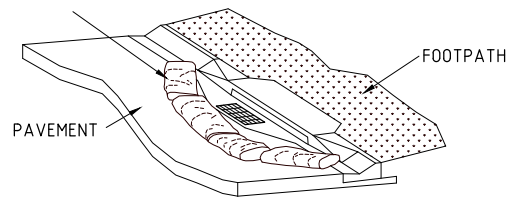
**MAINTENANCE PROGRAM FOR SILT FENCES**

1. REGULAR INSPECTIONS WILL BE REQUIRED TO CONTROL DAMAGE CAUSED BY ON SITE VEHICLES OR MOVEMENT OF STOCKPILES.
2. INSPECTED AFTER EACH STORM EVENT THAT RESULTS IN RUN-OFF.
3. REMOVE EXCESS SEDIMENT DEPOSITS.
4. INVESTIGATE THE SOURCE OF ANY EXCESSIVE SEDIMENT. (REFER B.C.C. EBMP GROUP 5 FIG.5.6).

**NOTE : SILT MANAGEMENT**

SILT FENCES ARE TO BE EMPLOYED WHERE CONDITIONS DURING CONSTRUCTION REQUIRE THE CONTROL OF ANY POSSIBLE SILT MOVEMENT ON THE SITE,AS DIRECTED BY THE SUPERVISOR.

SAND BAG AROUND INLET TO STOP SILT ENTERING GULLY

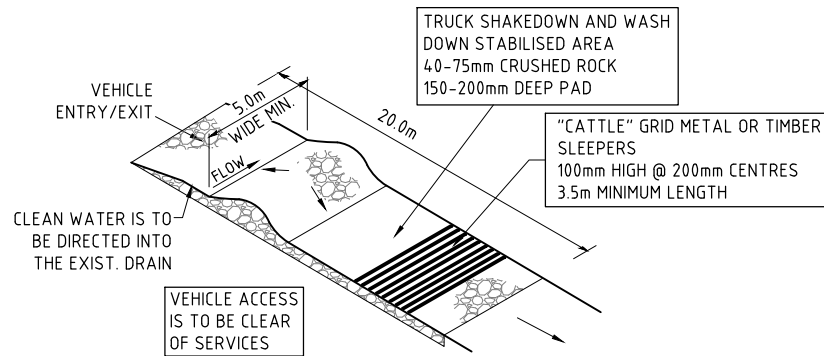


**GULLY INLET PROTECTION**  
N.T.S.

**MAINTENANCE PROGRAM FOR GULLY INLET PROTECTION**

1. REGULAR INSPECTIONS AFTER EACH RUNOFF EVENT TO ENSURE THAT THE PROTECTION DEVICE IS STILL IN PLACE AND ANY EXCESSIVE SEDIMENT DEPOSITS ARE TO BE REMOVED.
2. THE TOP OF THE SANDBAGS ARE TO BE LOWER THAN THE TOP OF THE KERB AND CHANNEL.

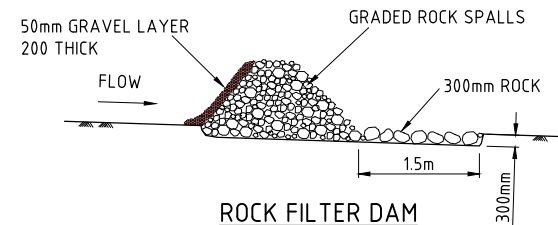
THIS FORM OF GULLY INLET PROTECTION WORK SHALL BE IMPLEMENTED ONCE BACKSTONES ARE IN PLACE. UPON SUCCESSFUL COMPLETION OF 'ON MAINTENANCE' INSPECTION, MEASURES ARE TO BE REMOVED.



**TRUCK SHAKEDOWN DETAIL**  
N.T.S.

**MAINTENANCE PROGRAM FOR TRUCK SHAKEDOWN**

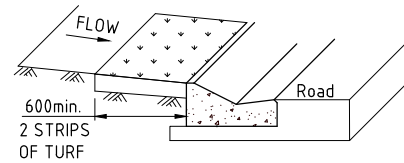
THE CONTRACTOR IS TO INSPECT THE ENTRY/EXIT AND WASH DOWN AREA TO ENSURE THAT IT IS NOT SILTED UP OR DAMAGED. ALL WATER USED DURING WASHING AND MAINTAINING THE AREA IS TO BE DIRECTED TO THE BUND.



**ROCK FILTER DAM**  
N.T.S.

**MAINTENANCE PROGRAM FOR ROCK FILTER DAM**

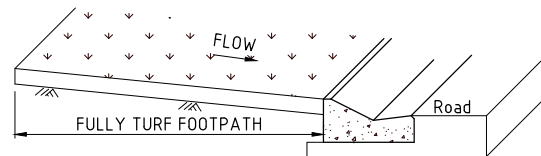
1. INSPECTIONS TO BE CARRIED OUT AFTER EACH RUNOFF EVENT.
2. SILT BUILT UP TO BE REMOVED DURING CONSTRUCTION AS REQUIRED BY THE SUPERVISING ENGINEER
3. TO BE REMOVED WHEN THE EXPOSED AREAS HAVE BEEN STABILISED.



**GRASS FILTER STRIPS  
(ROADS & DRAINAGE PHASE)**  
N.T.S.

**MAINTENANCE PROGRAM FOR GRASS FILTER STRIPS**

THE SIGNIFICANT BUILD UP ON FILTER STRIPS INDICATES INEFFICIENT ON SITE EROSION AND SEDIMENT CONTROLS. THE SOURCE OF ANY EXCESSIVE SEDIMENT DEPOSITS IS TO BE INVESTIGATED.



**GRASS FILTER - FULL FOOTPATH TURFING  
(PRACTICAL COMPLETION PHASE)**  
N.T.S.

**MAINTENANCE PROGRAM FOR GRASS FILTER STRIPS**

THE SIGNIFICANT BUILD UP ON FILTER STRIPS INDICATES INEFFICIENT ON SITE EROSION AND SEDIMENT CONTROLS. THE SOURCE OF ANY EXCESSIVE SEDIMENT DEPOSITS IS TO BE INVESTIGATED.

**SILT MANAGEMENT DETAILS AND MAINTENANCE PROGRAMS.**

NORTH:

SCALE:

NOT TO SCALE THIS SCALE SHOWN IS ORIGINAL DRAWING SCALE

A1

ISSUE:

TITLE:

EROSION AND SEDIMENT CONTROL DETAILS

DFC (PROJECT MANAGEMENT PTY LTD)

'ARCHERS WAY' ESTATE - STAGE 3  
AT 22-80 CASH STREET, D'AGUILAR



DETAILS:

JOB NO: M2584E\_3

PLAN: ES04 ISSUE: A

MORETON BAY REGIONAL COUNCIL REF:  
DA/38032/2019/V3VR  
FILE NAME: EROSION.DWG



BRISBANE - SUNSHINE COAST - CENTRAL QLD  
BRISBANE  
JFP House - 76 Ernest Street,  
South Brisbane Qld 4101  
P 07 3012 0100 W www.jfp.com.au  
JFP URBAN CONSULTANTS PTY. LTD. A.C.N. 050 414 045

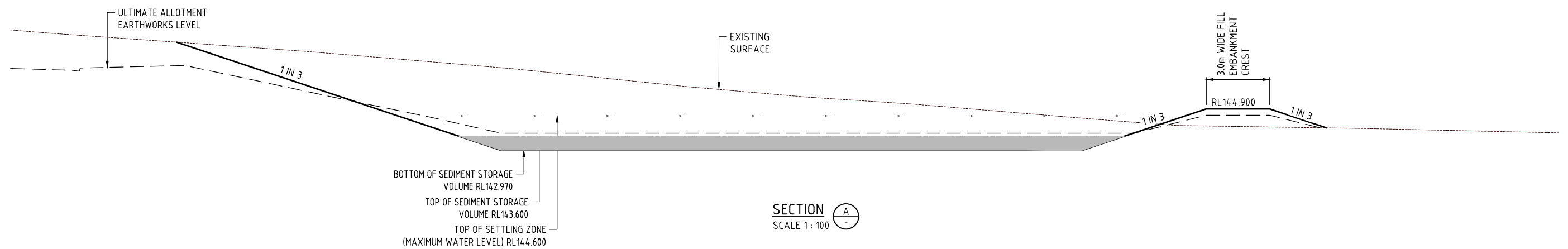
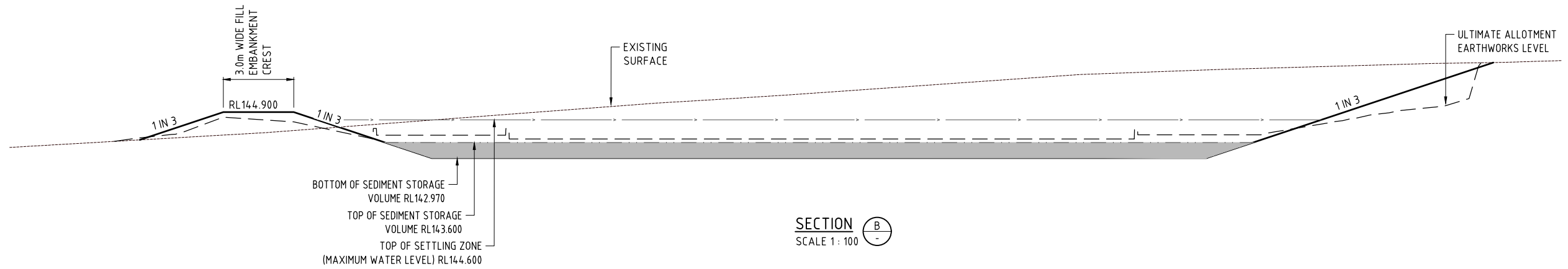
PLANNERS  
URBAN DESIGNERS  
SURVEYORS  
ENGINEERS  
LANDSCAPE ARCHITECTS

APPROVED  
FOR AND ON BEHALF OF JFP URBAN CONSULTANTS PTY LTD  
DESIGNED  
DRAWN  
CHECKED  
DATUM: AHD  
ISSUE: A  
DETAILS:

DESIGNED  
DRAWN  
CHECKED  
DATUM: AHD  
ISSUE: A  
DETAILS:

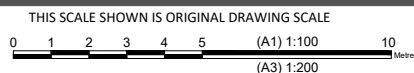






NORTH:

SCALE:  
1:100  
A1



ISSUE:

TITLE:

EROSION AND SEDIMENT CONTROL DETAILS  
SEDIMENT BASIN 1 - SHEET 2 OF 2

DFC (PROJECT MANAGEMENT PTY LTD)

'ARCHERS WAY' ESTATE - STAGE 3  
AT 22-80 CASH STREET, D'AGUILAR



DETAILS:

JOB NO:  
M2584E\_3  
PLAN:  
ES06  
ISSUE:  
A

MORETON BAY REGIONAL COUNCIL REF:  
DA/38032/2019/V3VR  
FILE NAME: EROSION TEMP SED BASINS.DWG

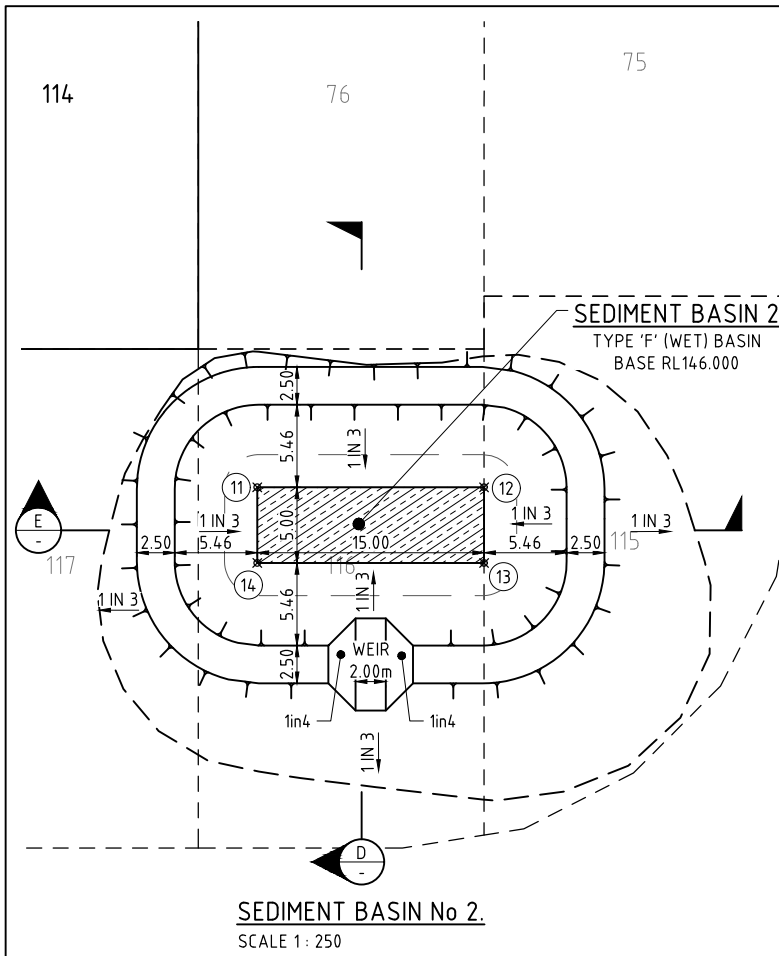


BRISBANE - SUNSHINE COAST - CENTRAL QLD  
BRISBANE  
JFP House - 76 Ernest Street,  
South Brisbane Qld 4101  
P 07 3012 0100 W www.jfp.com.au  
JFP URBAN CONSULTANTS PTY. LTD. A.C.N. 050 414 045

PLANNERS  
URBAN DESIGNERS  
SURVEYORS  
ENGINEERS  
LANDSCAPE ARCHITECTS

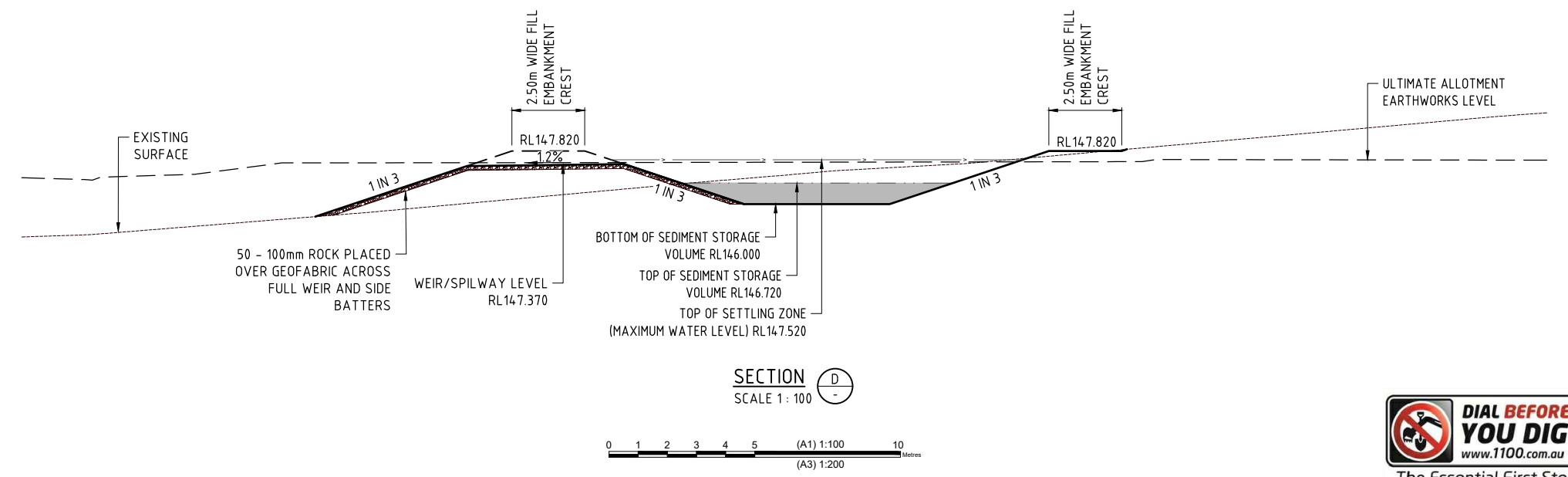
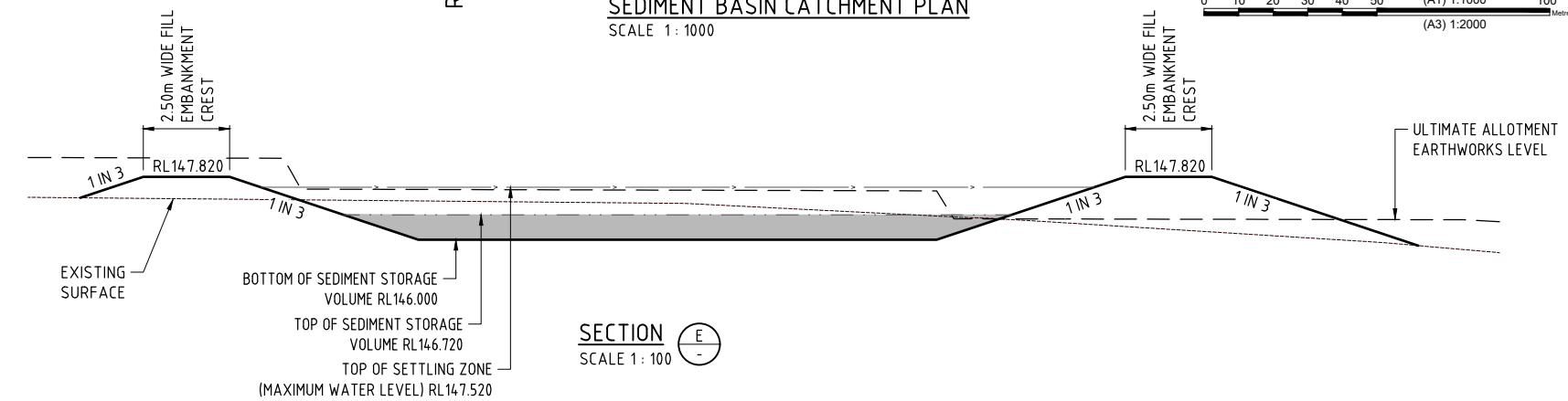
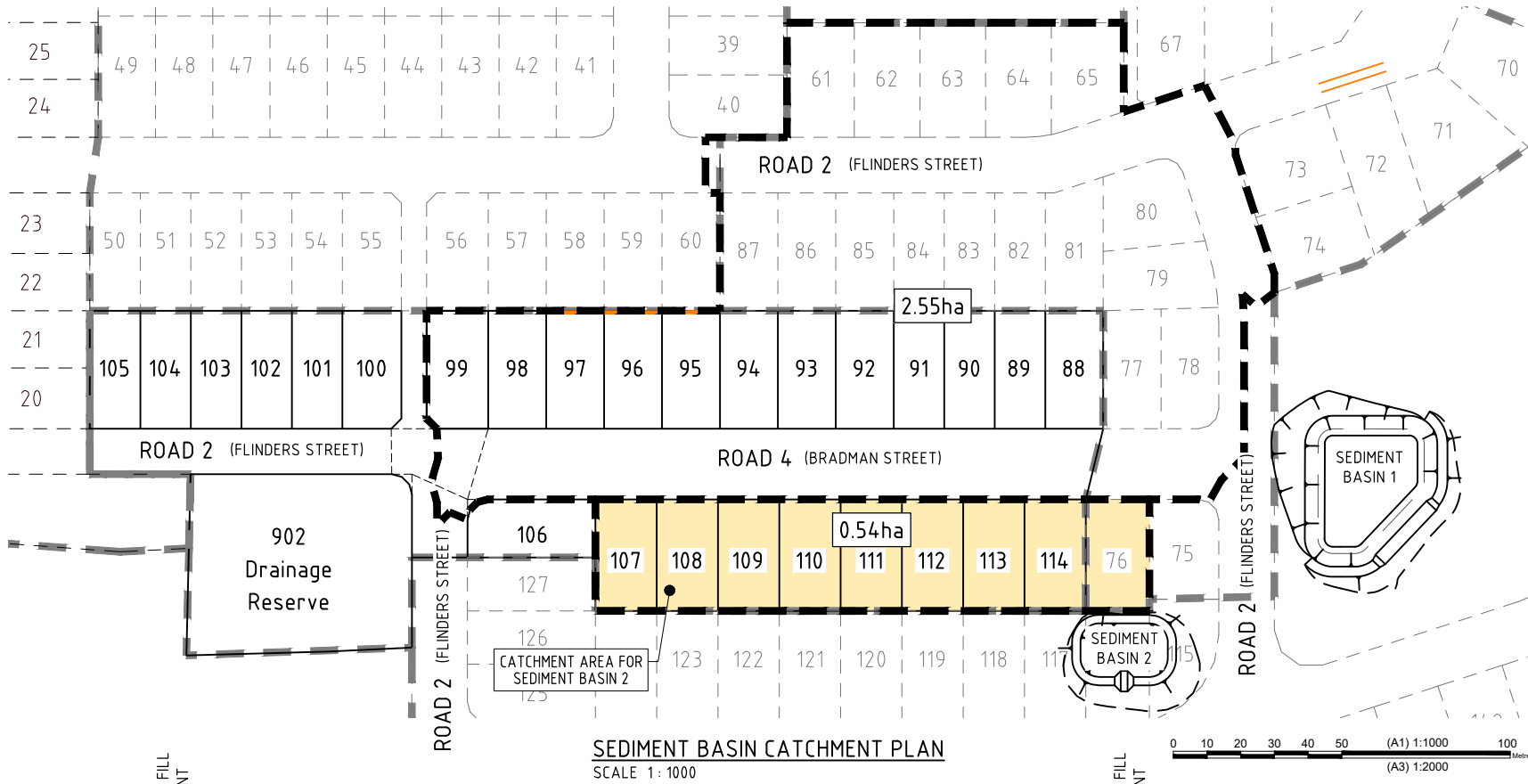
APPROVED	T. MCKINNEY RPEQ 5087	A. FRASER RPEQ 5691	J. PAPPAS RPEQ 6086	DESIGNED CDV	CDV
CHECKED	S. MARSH RPEQ 8068	H. WATSON RPEQ 6200	PNH	DATUM: AHD	ISSUE: DETAILS:

DATE: 24/09/21  
INIT: CDV



SETOUT AND LEVEL TABLE				
PT No.	TYPE	EASTING	NORTHING	LEVEL
11	IP	480962.816	7014467.340	146.000
12	IP	480977.688	7014465.381	146.000
13	IP	480977.035	7014460.424	146.000
14	IP	480962.163	7014462.383	146.000

SEDIMENT BASIN No. 2 DESIGN CRITERIA	
SETTLING VOLUME CALCULATIONS	
SEDIMENT BASIN TYPE	TYPE F (WET)
CHEMICAL FLOCCULATION TREATMENT AS REQUIRED TO ENSURE WATER QUALITY REQUIREMENTS ARE ACHIEVED.	
TOTAL CATCHMENT AREA (ha)	0.54 ha
ROAD PAVEMENT AREA (ha)	-
VERGE/ALLOTMENT AREA (ha)	0.54 ha
SETTLING ZONE DEPTH (m)	0.8m
SETTLING VOLUME (m³)	108
SEDIMENT STORAGE DEPTH (m)	0.72
SEDIMENT STORAGE VOLUME (m³)	54
SEDIMENT BASIN LEVEL DETAILS	
TOP OF FILL EMBANKMENT CREST	147.820
MAXIMUM WATER LEVEL	147.520
WEIR/SPILLWAY LEVEL	147.370
TOP OF SEDIMENT STORAGE	146.720
BOTTOM OF SEDIMENT STORAGE	146.000
DESIGN CRITERIA BASED ON: <ul style="list-style-type: none"><li>BCC - SEDIMENT BASIN DESIGN, CONSTRUCTION MAINTENANCE (January 2001) - Equation (4)</li><li>ICEA (Australasia)- BOOK 4 - SEDIMENT CONTROL FACTS SHEETS - SEDIMENT BASINS - VERSION 1</li></ul>	
WEIR/SPILLWAY DETAILS	
Q20 DISCHARGE (m³/sec)	0.250
WEIR/SPILLWAY BASE WIDTH (m)	2
SPILLWAY SLOPE (%)	1.20
MANNINGS (n)	0.04
WATER DEPTH (m)	0.150
VELOCITY (m/sec)	0.668



- ### SEDIMENT BASIN MAINTENANCE PROGRAM
- FOLLOWING STORM EVENTS WATER SHOULD BE ALLOWED TO SETTLE, FOR THE TIME REQUIRED FOR SUSPENDED SILT TO SETTLE INTO THE SEDIMENT STORAGE ZONE IN THE BASIN.
  - IN LARGER STORM EVENTS WATER SHALL STILL BE DIRECTED INTO THE BASIN SO COARSE SEDIMENT CAN BE REMOVED.
  - PRIOR TO DE-WATERING OF THE BASIN, WATER QUALITY TESTING BY A NATA CERTIFIED LABORATORY MUST BE UNDERTAKEN TO ENSURE THE FOLLOWING WATER QUALITY REQUIREMENTS ARE ACHIEVED:
    - PH 6.5 to 8.5
    - TSS 50mg/l TOTAL SUSPENDED SOLIDSTHE SUPERINTENDENT IS TO ADVISE OF FLOCCULATION TREATMENT METHODS WHERE WATER QUALITY REQUIREMENTS ARE NOT ACHIEVED.
  - ON EACH OCCASION WHEN A TYPE F OR TYPE D BASIN CANNOT BE DE-WATERED PRIOR TO BEING SURCHARGED BY A FOLLOWING RAINFALL EVENT, THE OPERATOR MUST RECORD SUCH AN EVENT AND REPORT IT TO THE APPROPRIATE REGULARITY AUTHORITY. WHERE APPROPRIATE, ALTERNATIVE OPERATING PROCEDURES MAY NEED TO BE ADOPTED IN CONSULTATION WITH THE REGULARITY AUTHORITY IN ORDER TO ACHIEVE OPTIMUM ENVIRONMENTAL PROTECTION.
  - A MARKER PEG SHALL BE INSTALLED FIRMLY INTO THE BASE OF THE BASIN WITH THE TOP OF THE PEG 720mm ABOVE THE BASIN INVERT. ONCE STORED SEDIMENT REACHES THIS MAXIMUM LEVEL THE SEDIMENT IS TO BE REMOVED.
  - AFTER REMOVAL THE SEDIMENT CAN BE DRIED IN AN APPROVED MANNER UPSTREAM OF THE BASIN/PONDED AREAS AND THEN REMOVED FROM SITE OR MIXED WITH ON-SITE SOILS (IN A MANNER THAT WILL NOT CAUSE EROSION) AND BURIED.
  - PORTABLE DECANT PUMPS ARE TO BE USED TO DRAIN CLEAR WATER FROM THE BASIN/PONDED AREAS. WHEN PUMPING ENSURE SUSPENDED SEDIMENT IS NOT ALLOWED TO BE PUMPED OUT OF THE BASIN.
  - NATURAL GROUND COVER OVER THE SITE SHOULD BE PRESERVED FOR AS LONG AS POSSIBLE AND IN SOME AREAS NOT REMOVED AT ALL.
  - IMMEDIATELY RESEED OR REVEGETATE DISTURBED AREAS (WHERE PRACTICABLE).
  - ON SITE TRAFFIC MOVEMENT SHOULD BE MINIMISED. ROADS SHOULD BE SWEEPED OF SEDIMENT RATHER THAN WASHED.
  - DRAINAGE CONTROL SHOULD BE IMPLEMENTED ON THE UP-SLOPE SIDE OF STOCKPILES. SEDIMENT FENCES SHOULD BE PLACED AT THE DOWN-SLOPE SIDE OF ALL STOCKPILES.

BRISBANE - SUNSHINE COAST - CENTRAL QLD  
BRISBANE  
JFP House - 76 Ernest Street,  
South Brisbane Qld 4101  
P 07 3012 0100 W www.jfp.com.au  
JFP URBAN CONSULTANTS PTY. LTD. A.C.N. 050 414 045

PLANNERS  
URBAN DESIGNERS  
SURVEYORS  
ENGINEERS  
LANDSCAPE ARCHITECTS

NORTH:  
SCALE:  
1:250  
A1

THIS SCALE SHOWN IS ORIGINAL DRAWING SCALE  
0 2.5 5 7.5 10 12.5 15 17.5 20 22.5 25  
(A1) 1:250  
(A3) 1:500

DO NOT SCALE FROM THIS DRAWING - USE ONLY DIMENSIONS PROVIDED - IF IN DOUBT PLEASE ENQUIRE

APPROVED  
FOR AND ON BEHALF OF JFP URBAN CONSULTANTS PTY LTD  
DESIGNED  
DRAWN  
CHECKED  
DATE: AHD  
ISSUE: A  
DETAILS:  
CDV  
CDV  
PNH  
24/09/21  
CDV  
INIT:

ISSUE:  
TITLE:  
EROSION AND SEDIMENT CONTROL DETAILS  
SEDIMENT BASIN 2  
DFC (PROJECT MANAGEMENT PTY LTD)  
'ARCHERS WAY' ESTATE - STAGE 3  
AT 22-80 CASH STREET, D'AGUILAR

DETAILS:  
JOB NO:  
M2584E\_3  
PLAN:  
ES07  
ISSUE:  
A  
MORETON BAY REGIONAL COUNCIL REF:  
DA/38032/2019/V3VR  
FILE NAME: EROSION TEMP SED BASINS.DWG

DENNIS  
FAMILY  
CORPORATION  
The Essential First Step  
www.1100.com.au