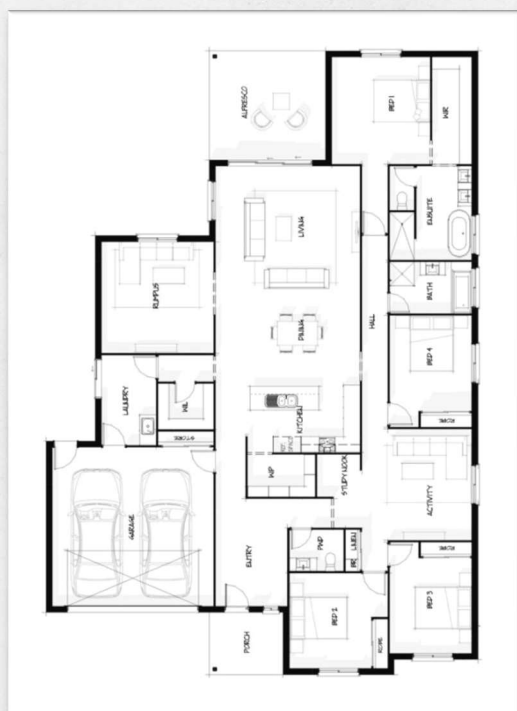




House & Land Package

Builder	NuTrend Homes		Lot No	68	Price	\$697,500*
Lot	737sqm	House	234 sqm	Summary	4 BED, 2 BATH, 2 CAR, Multiple Living	



Inclusions

- Full Render to entire home
- Colorbond Roof
- Stone Benchtop throughout
- Remote Garage
- Move in Ready with:
 - Flooring – Tiles & Carpet
 - Landscaping
 - Fencing
 - Air-Conditioning
 - Exposed Aggregate Driveway
 - Screens to all windows and external doors (excluding Front Entry)

Builder Disclaimer:

While we aim to maintain accuracy there are many variables on house and land packages. Prices and Inclusions may change/vary and all final pricing is subject to but not limited to site investigation, survey, soil tests and office approval. We are flexible on inclusions and happy to alter/change to suit your requirements/budget/needs. Photos and floor plan are to be used as a guide only, inclusions, layout, sizes may vary and are used for marketing purposes only. Land purchase is through the developer/vendor/real estate agent directly. Building contract through NuTrend Homes. Please contact us for full information, terms and conditions.

Developer Disclaimer:

This brochure is not a contract and is not binding. The information it contains does not constitute investment, legal, business, tax or other advice and has been prepared without reference to the investment objectives, financial situation, tax position or particular needs of any person. You should consult your professional adviser for legal, business or tax advice. Photos, maps, plans, drawings and descriptions are for illustration only and may differ from final built forms. While all reasonable care has been taken to ensure accuracy on publication, the information published may change from time to time to reflect changing circumstances, laws and regulations and without notice. Your contract of sale will set out all binding terms and up-to-date information. Prospective buyers should make and rely on their own enquiries and seek independent legal and financial advice before entering into any binding obligations. To the full extent permitted by law all liability is expressly excluded whether in negligence or otherwise, for any loss or damage in respect of, or arising from reliance on, this document. DFC (Project Management) Pty Ltd ABN 63 161 448 139 is project manager for the Archer's Way estate.