

# House & Land Package

## Lot 142, Bushman Close

ARCHER'S WAY  
ANOTHER DENNIS FAMILY COMMUNITY



Artist Impression

Turnkey package price:

# \$915,400

AVIA  
HOMES

## Marbella 210

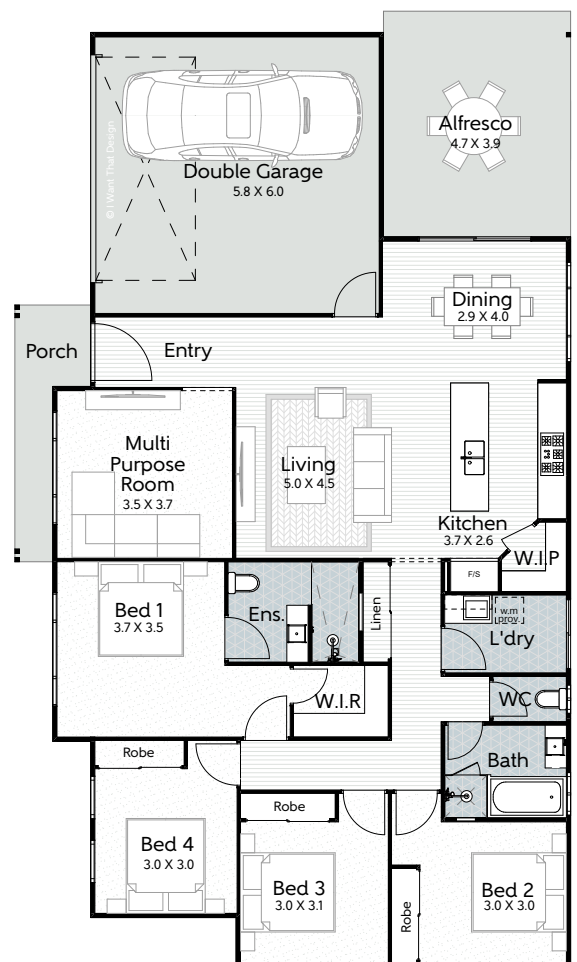
4  
BEDROOM

2.5  
BATHROOM

2  
CAR PARK

Lot Size: 1,112m<sup>2</sup> | House Size: 210.2m<sup>2</sup>

- Full turn-key inclusions
- Fixed site costs
- 2590mm ceiling height
- Ducted reverse cycle air-conditioning with upgraded tablet panel controller (sensors to all rooms)
- 3k/w Solar System
- Plush carpet in bedrooms
- 600mm x 600mm internal floor tiles and to alfresco
- Floor to ceiling tiles to bathroom and ensuite
- Engineered stone benchtops
- Waterfall feature to kitchen island bench
- Pendant lights to kitchen island bench x3
- 900mm Haier stainless steel gas cook top, oven and range hood
- Double under mount sink
- Soft close and finger pull cabinetry to kitchen and bathrooms
- Wall to wall shower niche to bathroom and ensuite
- Ceiling fans and LED lighting
- Digital smart lock to front door
- Windsor 4VG 1200mm front door



**Builder Disclaimer:**

This brochure is a guide only. Refer to quote or contract documentation for specific details. Standard inclusions are subject to availability and Karston Building Group reserves the right to alter the inclusions without notice. Speak to a New Home Consultant for more information.

**Developer Disclaimer:**

This brochure is not a contract and is not binding. The information it contains does not constitute investment, legal, business, tax or other advice and has been prepared without reference to the investment objectives, financial situation, tax position or particular needs of any person. You should consult your professional adviser for legal, business or tax advice. Photos, maps, plans, drawings and descriptions are for illustration only and may differ from final built forms. While all reasonable care has been taken to ensure accuracy on publication, the information published may change from time to time to reflect changing circumstances, laws and regulations and without notice. Your contract of sale will set out all binding terms and up-to-date information. Prospective buyers should make and rely on their own enquiries and seek independent legal and financial advice before entering into any binding obligations. To the full extent permitted by law all liability is expressly excluded whether in negligence or otherwise, for any loss or damage in respect of, or arising from reliance on, this document.

DFC (Project Management) Pty Ltd ABN 83 161 448 139 is project manager for the Archer's Way estate.