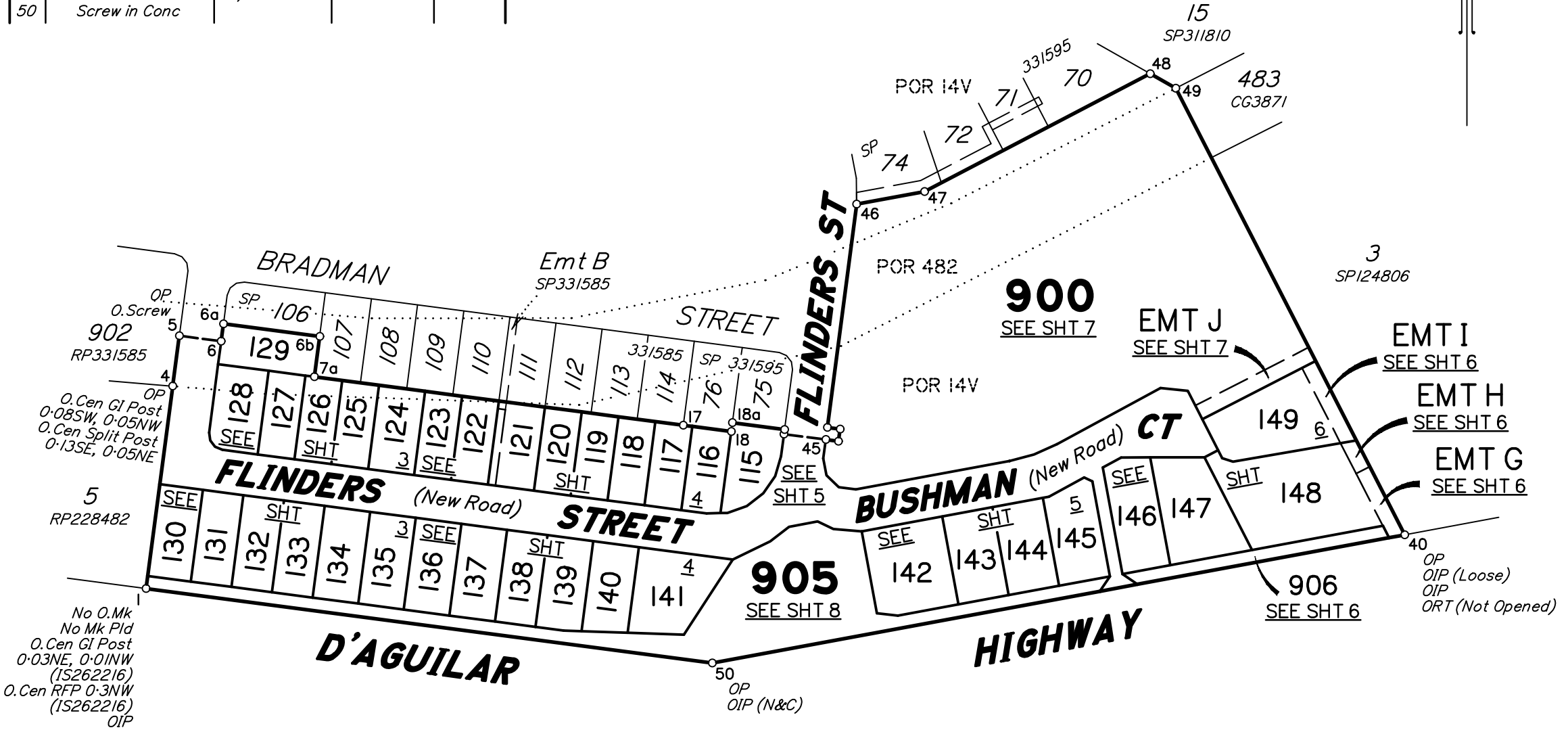




PRELIMINARY
15-10-2024

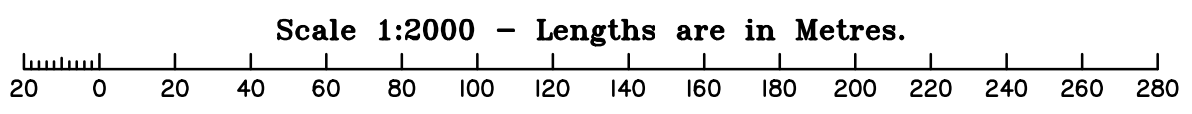
STN	TO	ORIGIN	BEARING	DIST
1	OIP	2/RP80309	187°29'50"	1.006
5	O.Screw in Kerb	12/SP331585	138°53'40"	4.543
17	O.Star Picket	25/SP331585	218°59'	0.936
40	OIP (Loose)	41/1S272908	328°12'	0.391
40	OIP	17/1S262216	161°52'	1.052
40	ORT (Not Opened)	2/RP71839	187°04'40"	12.935
45	O.Screw in Conc	28a/SP331595	341°02'10"	6.561
46	O.Nail in Kerb	26/SP331595	264°36'15"	5.207
48	OIP	15/SP331595	272°43'	8.74
49	OIP	13/1S262216	219°18'	1.603
49	OIP	37/1S272908	9°52'20"	7.687
50	OIP	18/1S262216	169°20'	1.141
50	Screw in Conc			Dist N&C



Area of New Road
8484 m²

Peg placed at all new corners, unless otherwise stated.

For Reinstatement Report See Sheet 2.



JFP URBAN CONSULTANTS PTY. LTD. (ACN 050 414 045) hereby certify that the land comprised in this plan was surveyed by the corporation, by LIAM CHRISTOPHER MORLAND, Surveying Associate, for whose work the corporation accepts responsibility, under the supervision of MATTHEW CAPPER, Coastal Surveyor, and that the plan is accurate, that the said survey was performed in accordance with the Survey and Mapping Infrastructure Act 2003 and Surveyors Act 2003 and associated Regulations and Standards and that the said survey was completed on

Date:
Authorised Signatory

Plan of Lots 115-149, 900, 905, 906, Emt F in Lot 121, Emts G-H in Lot 148, Emt I in Lot 149 and Emt J in Lot 900.

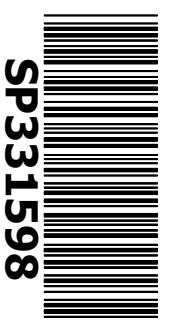
Canceling Lot 800 on SP331595.

LOCAL GOVERNMENT: MORETON BAY CITY LOCALITY: D'AGUILAR

Survey Records: No

Scale: 1:2000

Format: STANDARD



SP331598

0 50m 100m 150m State copyright reserved.

**WARNING : Folded or Mutilated Plans will not be accepted.
Plans may be rolled.
Information may not be placed in the outer margins.**

(Dealing No.)

4. Lodged by

(Include address, phone number, reference, and Lodger Code)

I. Existing		Created		
Title Reference	Description	New Lots	Road	Secondary Interests
51355837	Lot 800 on SP331595	115-149, 900 & 905-906.	New Rd	Emts F-J

ENCUMBRANCE EASEMENT ALLOCATIONS

Easement	Lots To Be Encumbered
Emt 722711841 (Emt E on SP331585)	121

Note: Emt 722711842 (Emt C on SP331585) is to be surrendered prior to lodgement of this plan.
Emt 723405469 (Emt AA on SP331595) is to be surrendered prior to lodgement of this plan.
Emt 723405470 (Emt AB on SP331595) is to be surrendered prior to lodgement of this plan.

REINSTATEMENT REPORT

- Search consisted of SP331595 (Subject Plan), SP331585 & IS262216.
- Boundaries have been fixed by original reference marks at stations 1, 5, 17, 40, 45, 46, 48 & 49, along with original occupation references at stations 1, 4, 6a, 6b, 7a, 11a, 17, 18, 18a, 45, 45a, 45b, 45c, 46, 47, 48 & 49.
- All dimensions are deed.
- Station 50 has been fixed at deed dimensions from stations 1 and 40. The OIP off station 50 agrees for bearing but not for distance. This OIP has thus been shown as noted and checked.

CONNECTION TO DATUM

- Connection to Datum was made on SP311634 and carried through SP311637, SP331585 and SP331595 to this plan.
- Note that connection to Datum was performed prior to GDA2020 coming into affect and so the survey is on GDA94.

**PRELIMINARY
15-10-2024**

115-120, 130-149, 905 & 906 121-128 & 900 129	Por 14V Por 14V & Por 482 Por 482
Lots	Orig

2. Orig Grant Allocation :

3. References :
Dept File :
Local Govt :
Surveyor : M2584-ST5

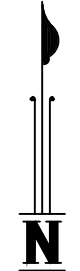
5. Passed & Endorsed :
By: JFP URBAN CONSULTANTS PTY LTD
ACN 050 414 045
Date :
Signed :
Designation : Cadastral Surveyor

6. Building Format Plans only.
I certify that :
* As far as it is practical to determine, no part of the building shown on this plan encroaches onto adjoining lots or road;
* Part of the building shown on this plan encroaches onto adjoining * lots and road
.....
Cadastral Surveyor/Director* Date
*delete words not required

7. Lodgement Fees :

Survey Deposit	\$
Lodgement	\$
.....New Titles	\$
Photocopy	\$
Postage	\$
TOTAL	\$

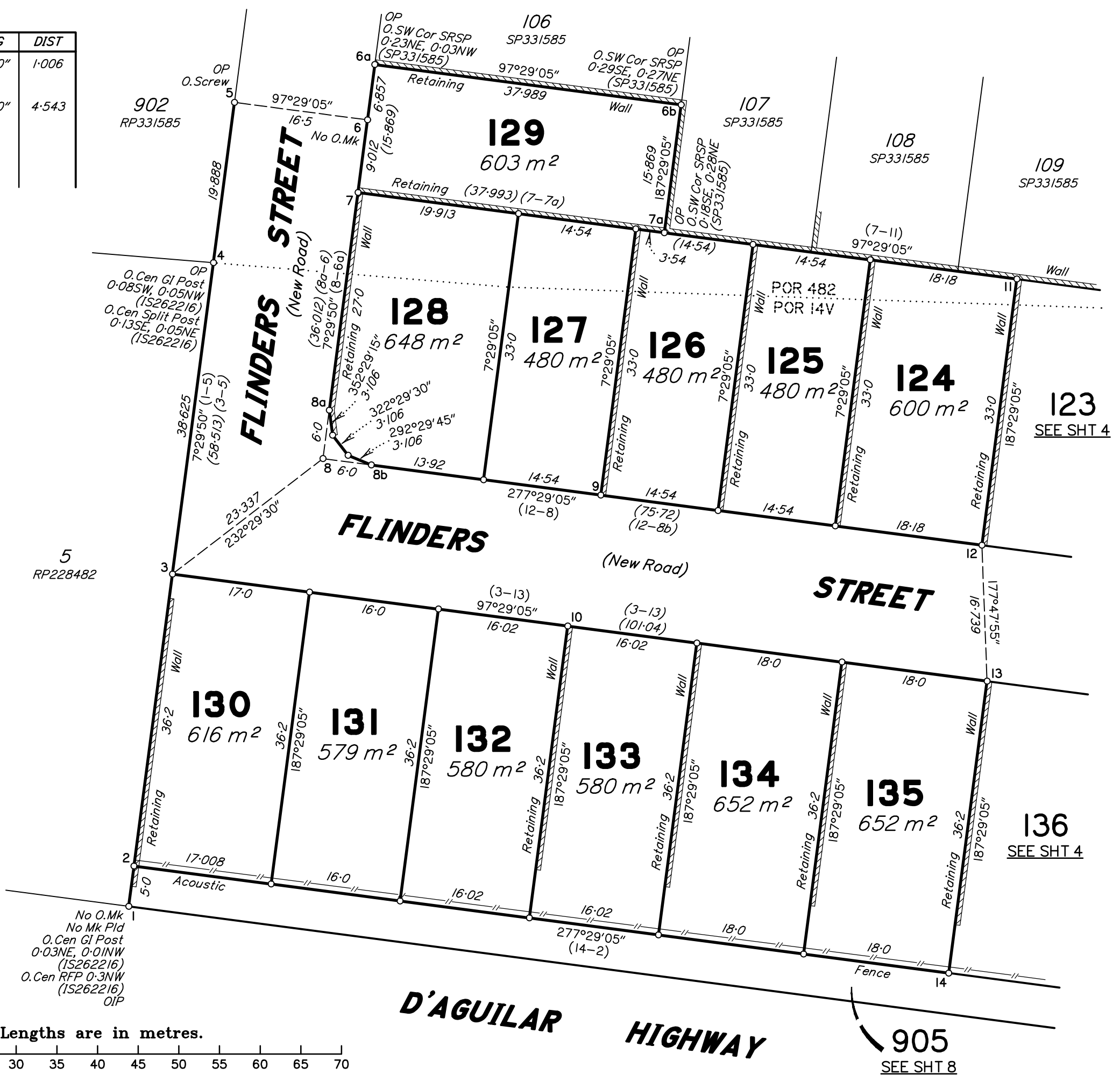
8. Insert Plan Number **SP331598**



REFERENCE MARKS

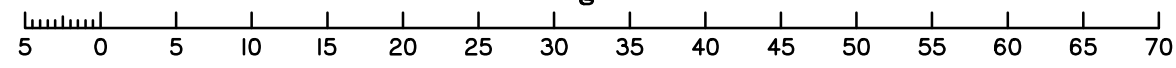
STN	TO	ORIGIN	BEARING	DIST
1	OIP	2/RP80309	187°29'50"	1.006
2	Pin			
3	Screw in Kerb			
5	O.Screw in Kerb	12/SP331585	138°53'40"	4.543
8	Screw in Kerb			
9	Screw in Kerb			
10	Screw in Kerb			
12	Screw in Kerb			
13	Screw in Kerb			

Note: SRSP denotes Steel Retaining Wall Support Post (at Top)



PRELIMINARY
15-10-2024

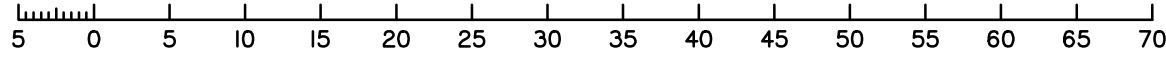
Scale 1:500 - Lengths are in metres.



Insert
Plan
Number
SP331598

State copyright reserved.

Scale 1:500 - Lengths are in metres.

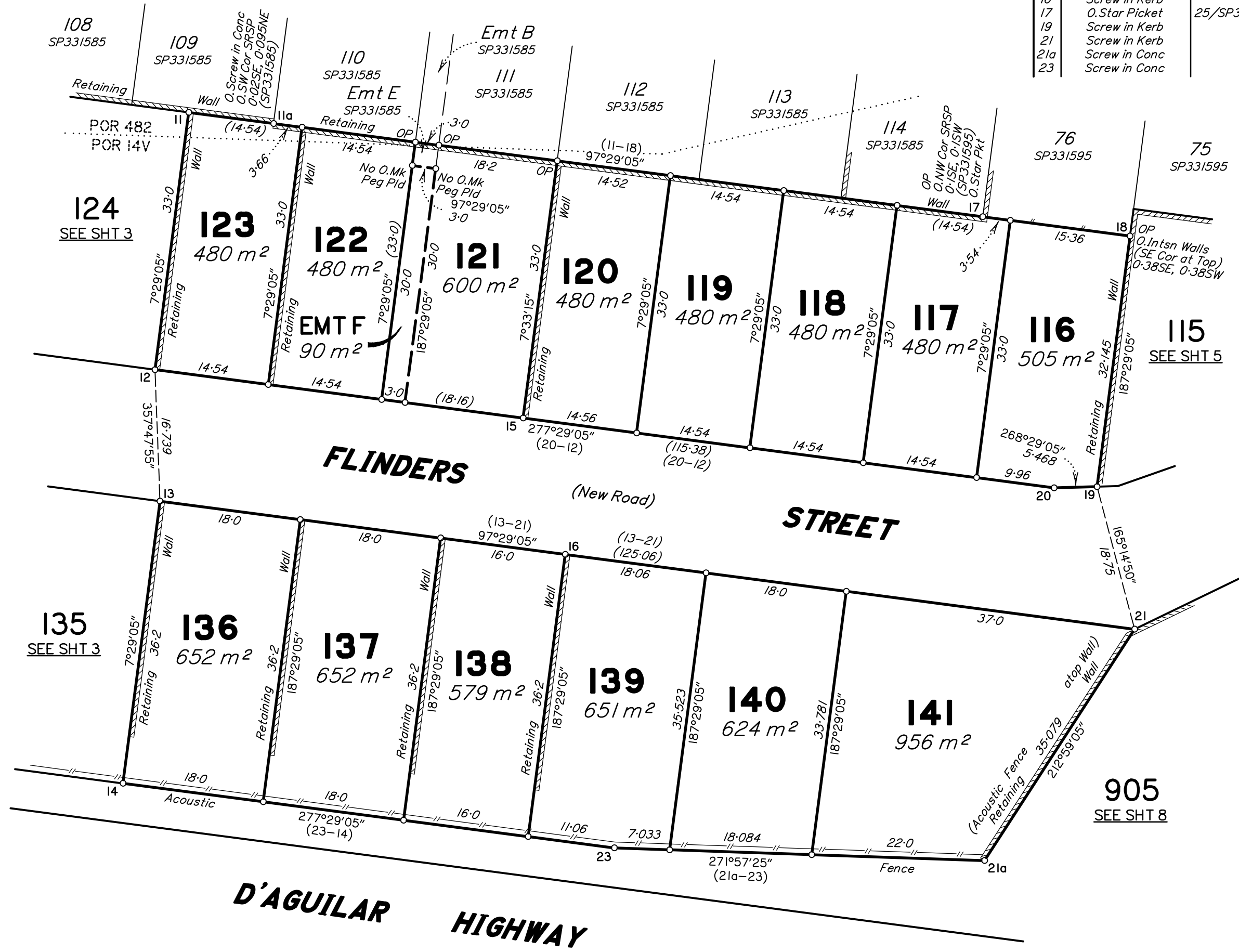


Note: SRSP denotes Steel Retaining Wall Support Post (at Top)

REFERENCE MARKS

STN	TO	ORIGIN	BEARING	DIST
12	Screw in Kerb			
13	Screw in Kerb			
15	Screw in Kerb			
16	Screw in Kerb			
17	O-Star Picket	25/SP331585	218°59'	0-936
19	Screw in Kerb			
21	Screw in Kerb			
21a	Screw in Conc			
23	Screw in Conc			

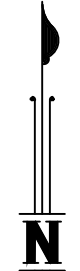
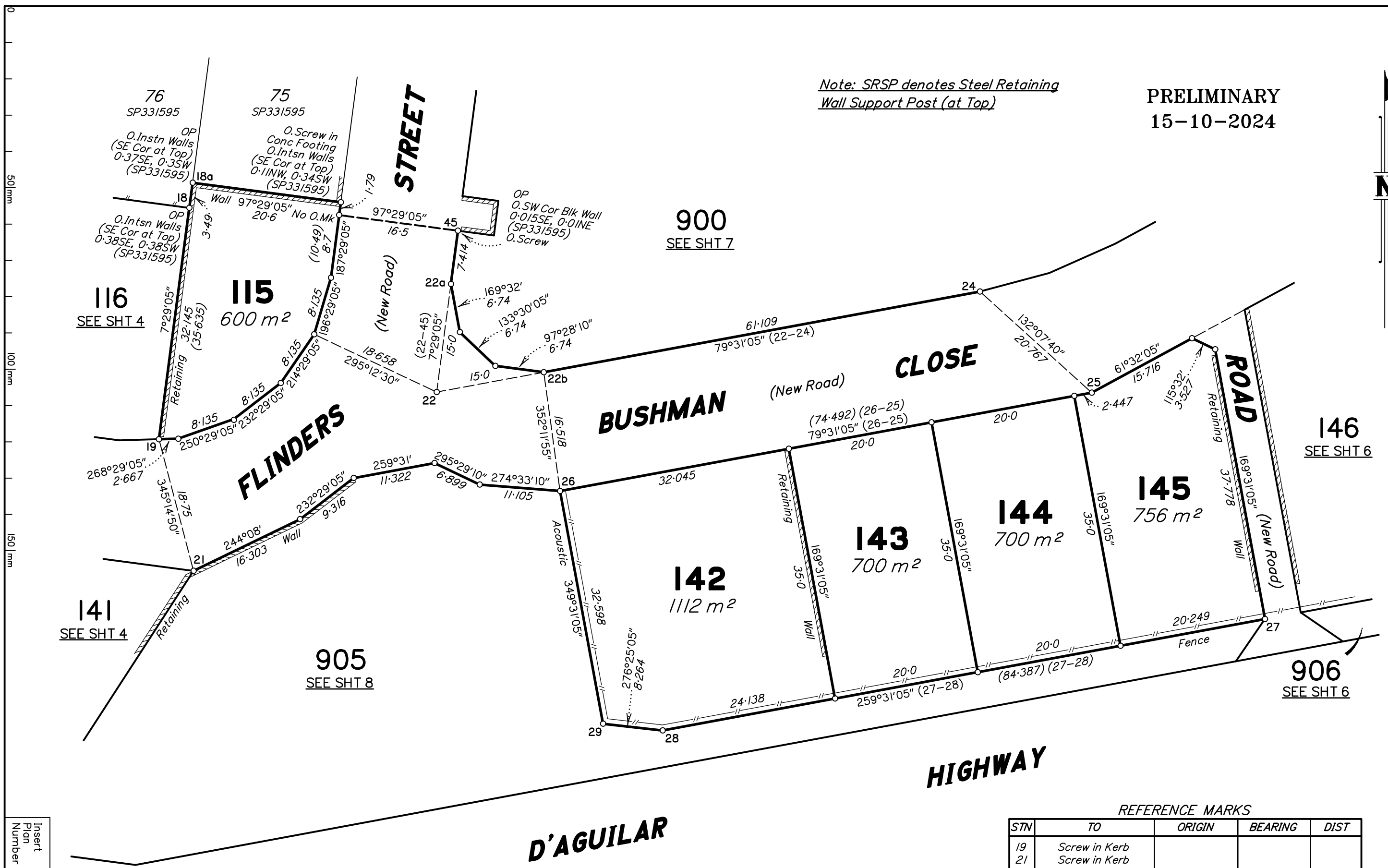
PRELIMINARY
15-10-2024



Insert
Plan
Number
SP331598
State copyright reserved.

PRELIMINARY
15-10-2024

*Note: SRSP denotes Steel Retaining
Wall Support Post (at Top)*



50mm
100mm
150mm

905
SEE SHT 8

900
SEE SHT 7

146
SEE SHT 6

906
SEE SHT 6

116
SEE SHT 4

115
600 m²

BUSHMAN
(New Road)

CLOSE

ROAD

FLINDERS

143
700 m²

145
756 m²

142
1112 m²

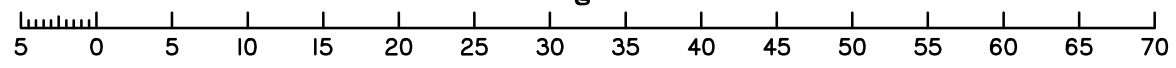
144
700 m²

141
SEE SHT 4

D'AGUILAR

HIGHWAY

Scale 1:500 - Lengths are in metres.



REFERENCE MARKS

STN	TO	ORIGIN	BEARING	DIST
19	Screw in Kerb			
21	Screw in Kerb			
22	Screw in Kerb			
24	Screw in Kerb			
25	Screw in Kerb			
26	Screw in Conc			
27	Screw in Conc			
29	Screw in Conc			
45	O.Screw in Conc	28a/SP331595	341°02'10"	6.561

Insert
Plan
Number
SP331598

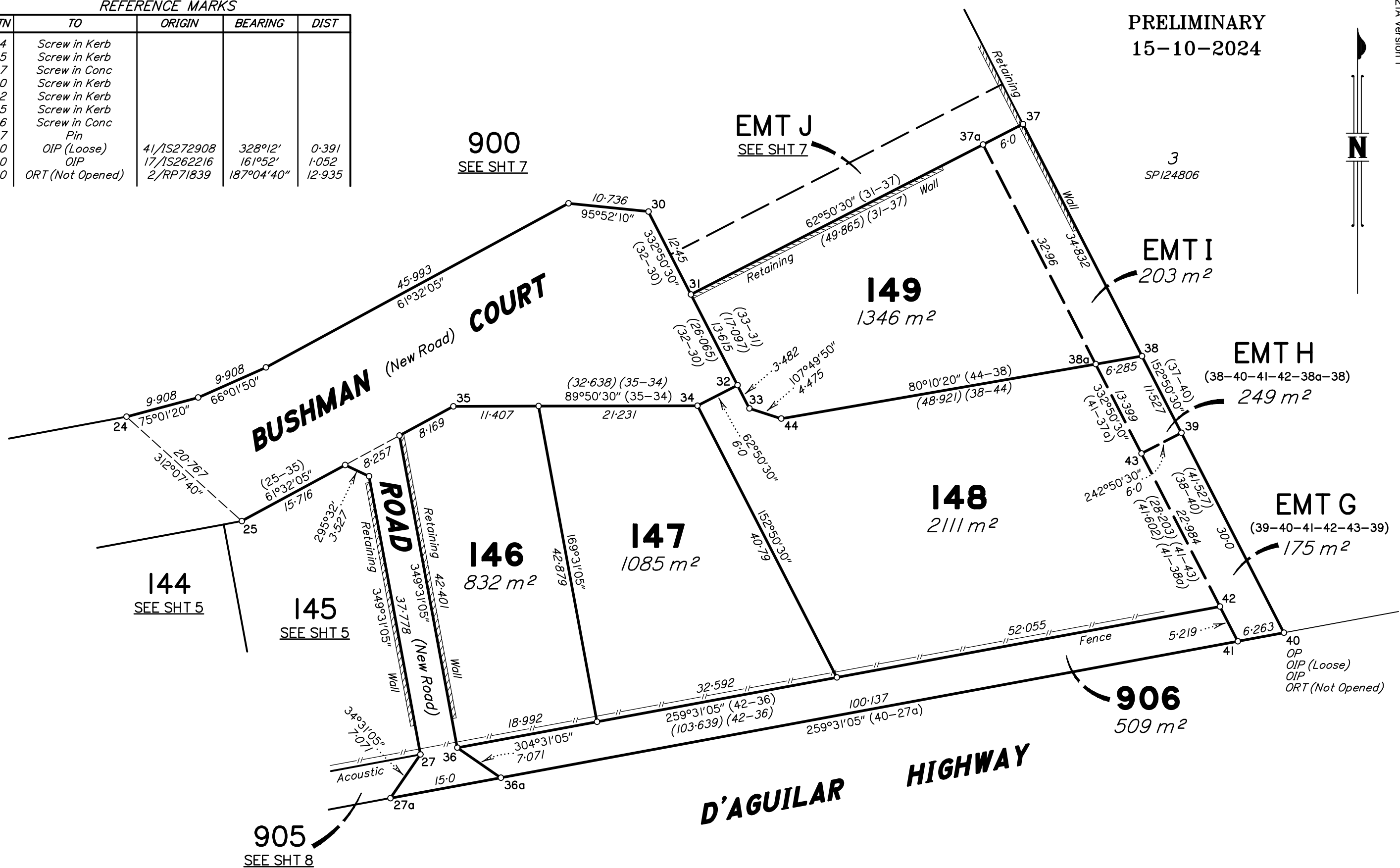
State copyright reserved.

PRELIMINARY
15-10-2024

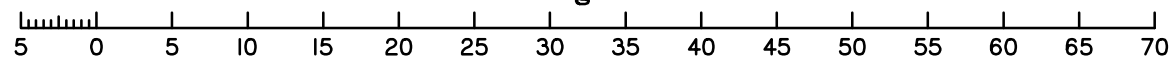


REFERENCE MARKS				
STN	TO	ORIGIN	BEARING	DIST
24	Screw in Kerb			
25	Screw in Kerb			
27	Screw in Conc			
30	Screw in Kerb			
32	Screw in Kerb			
35	Screw in Kerb			
36	Screw in Conc			
37	Pin			
40	OIP (Loose)	41/1S272908	328°12'	0.391
40	OIP	17/1S262216	161°52'	1.052
40	ORT (Not Opened)	2/RP71839	187°04'40"	12.935

50m
100m
150m



Scale 1:500 - Lengths are in metres.



Note: SRSP denotes Steel Retaining Wall Support Post (at Top)

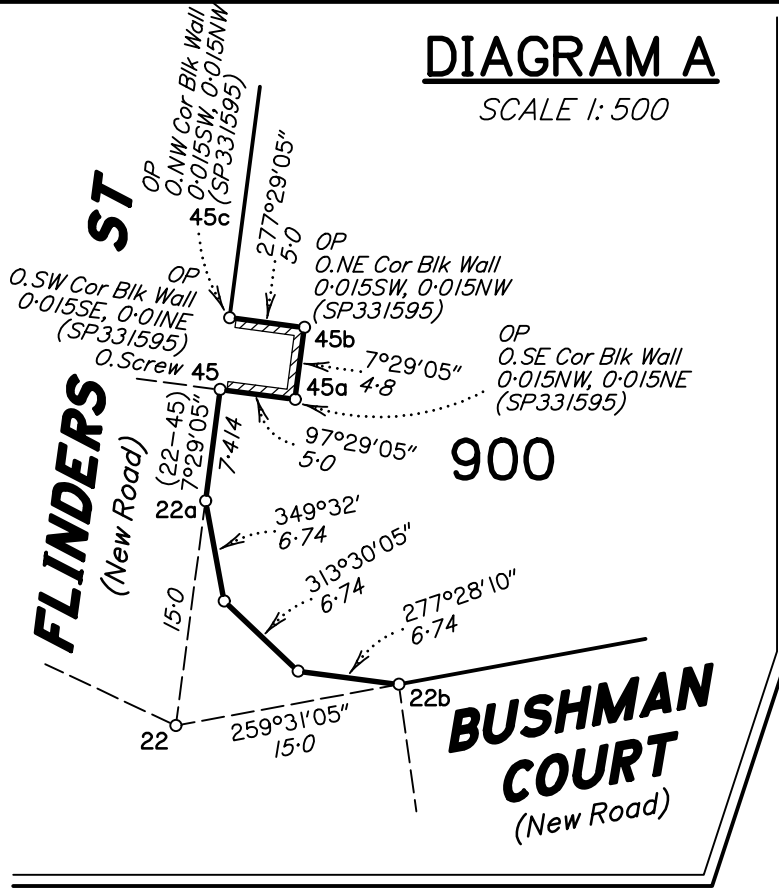
Insert
Plan
Number
SP331598
State copyright reserved.



DIAGRAM A

SCALE 1: 500

Note: SRSP denotes Steel Retaining Wall Support Post (at Top)

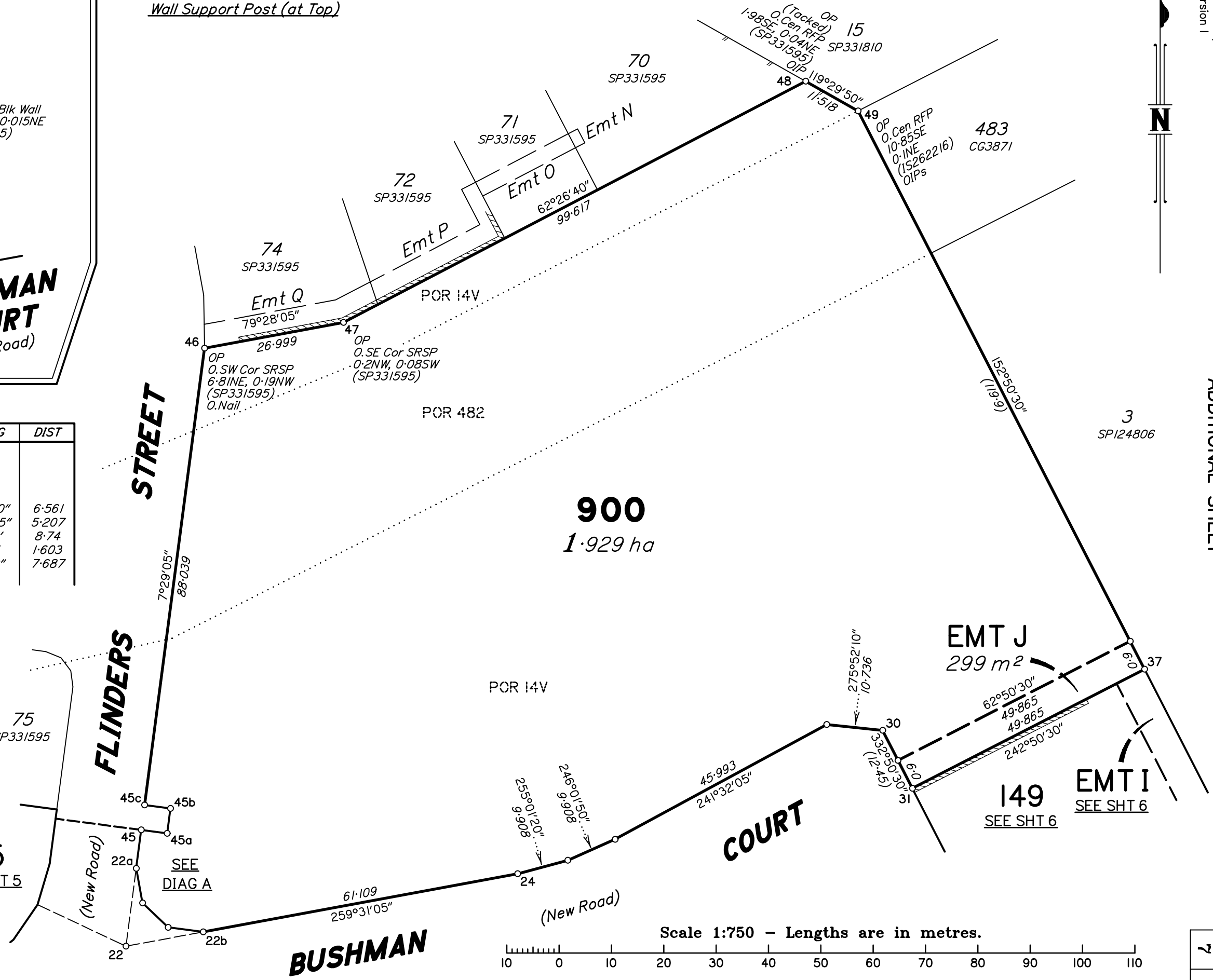


REFERENCE MARKS

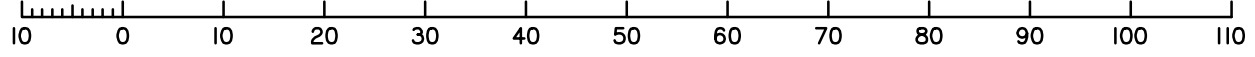
STN	TO	ORIGIN	BEARING	DIST
22	Screw in Kerb			
24	Screw in Kerb			
30	Screw in Kerb			
37	Pin			
45	O.Screw in Conc	28a/SP331595	341°02'10"	6.561
46	O.Nail in Kerb	26/SP331595	264°36'15"	5.207
48	OIP	15/SP331595	272°43'	8.74
49	OIP	13/1S262216	219°18'	1.603
49	OIP	37/1S272908	9°52'20"	7.687

PRELIMINARY
15-10-2024

Insert
Plan
Number
SP331598
State copyright reserved.



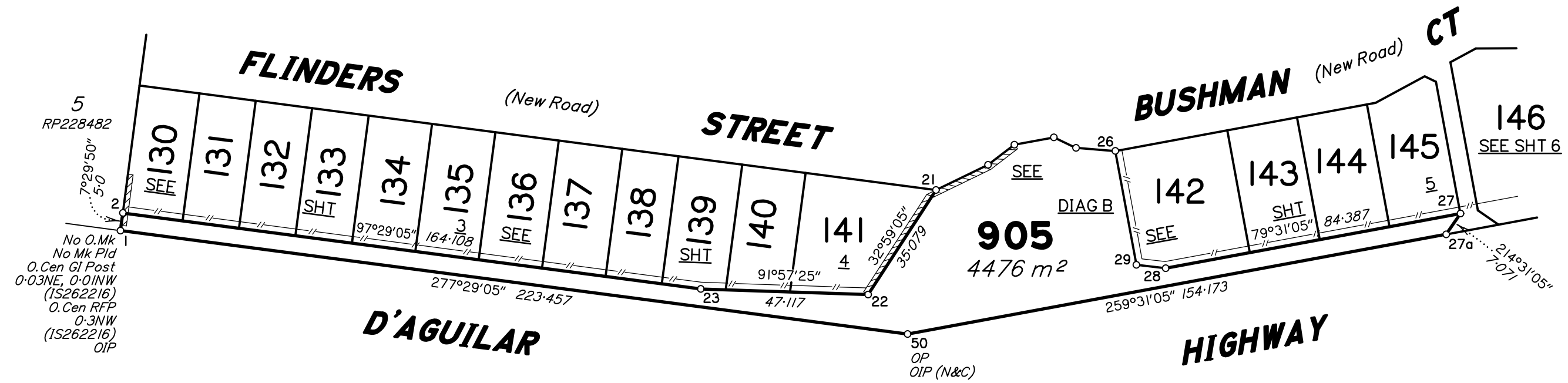
Scale 1:750 - Lengths are in metres.





PRELIMINARY
15-10-2024

Note: SRSP denotes Steel Retaining
Wall Support Post (at Top)

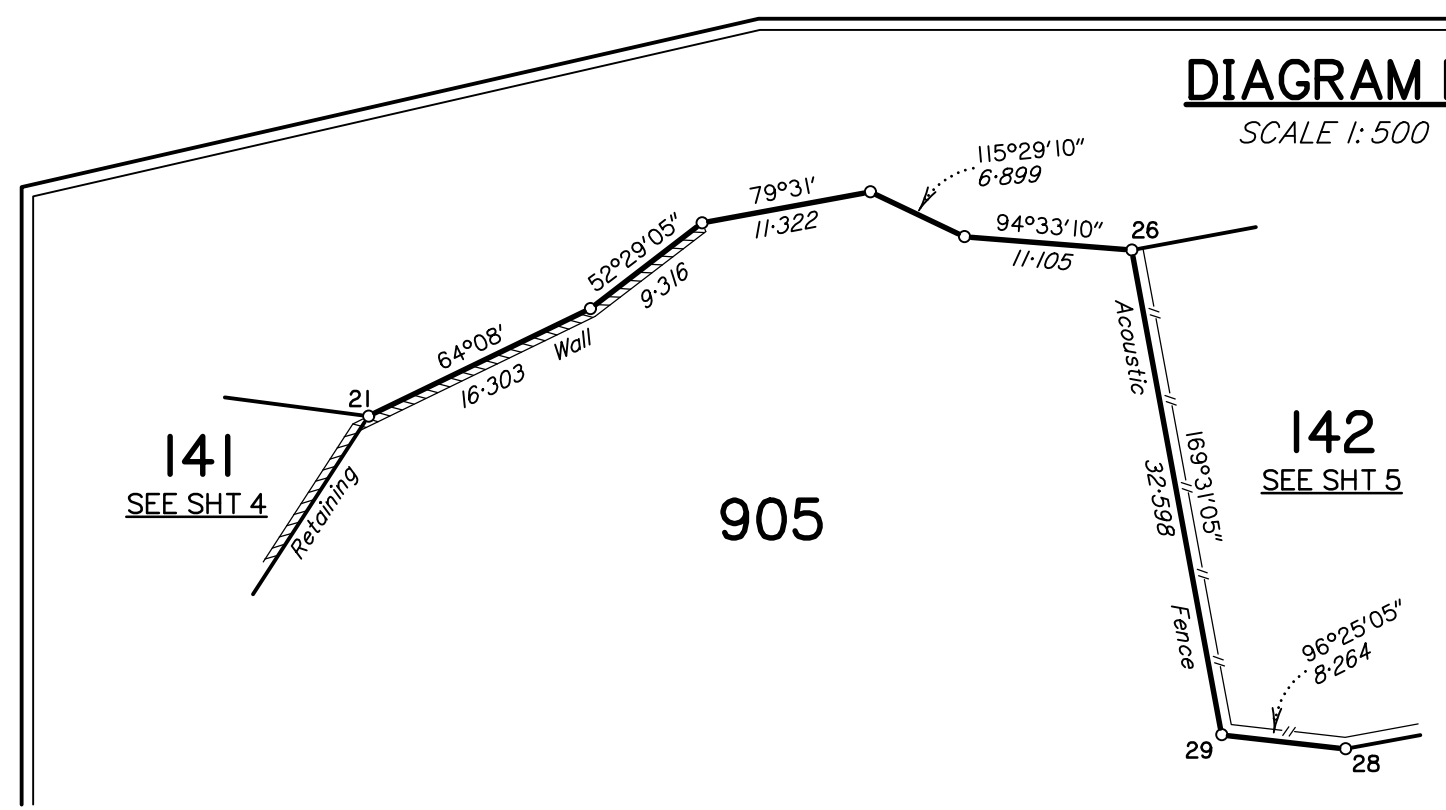


REFERENCE MARKS

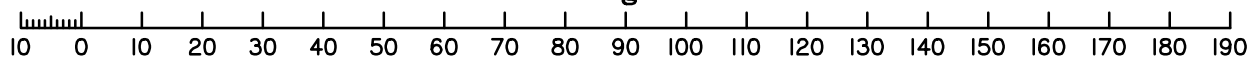
STN	TO	ORIGIN	BEARING	DIST
1	OIP	2/RP80309	187°29'50"	1.006
2	Pin			
21	Screw in Kerb			
22	Screw in Conc			
23	Screw in Conc			
26	Screw in Conc			
27	Screw in Conc			
29	Screw in Conc			
50	OIP	18/IS262216	169°20'	1.141 Dist N&C
50	Screw in Conc			

DIAGRAM B

SCALE 1:500



Scale 1:1250 - Lengths are in metres.



Insert
Plan
Number
SP331598

State copyright reserved.