

# House & Land Package

## Lot 146, Bushman Close

ARCHER'S WAY  
ANOTHER DENNIS FAMILY COMMUNITY



Artist Impression

Turnkey package price:

# \$854,900

**AVIA**  
HOMES

**Milos 210**

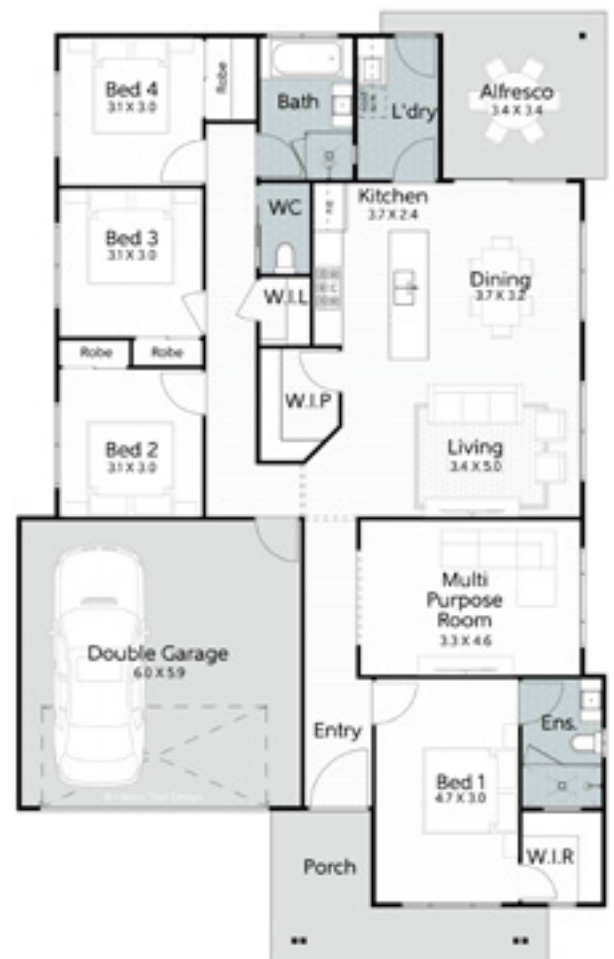
 **4**  
BEDROOM

 **2.5**  
BATHROOM

 **2**  
CAR PARK

 **Lot Size: 832m<sup>2</sup> | House Size: 211.3m<sup>2</sup>**

- Full turn-key inclusions
- Fixed site costs
- 2590mm ceiling height
- Ducted reverse cycle airconditioning with airtouch 5 controller (sensors to all rooms)
- Three phase power
- Ceiling fans and LED lighting
- Digital smart lock to front door
- 1200mm wide front entry door
- Plush carpet including 10mm underlay to bedrooms
- 600mm x 600mm porcelain tiles to kitchen, living, dining room & alfresco <sup>\*plan specific</sup>
- 20mm engineered stone benchtops
- Waterfall feature to kitchen island bench
- Builders range pendant lights to the kitchen island bench <sup>\*plan specific</sup>
- 900mm Fisher & Paykel induction cooktop, electric oven & integrated rangehood
- 600mm integrated dishwasher
- Double under mount sink
- Floor to ceiling tiles to bathroom & ensuite
- Soft close and finger pull cabinetry to kitchen & bathrooms
- 400mm finished height wall to wall shower niche to bathroom & ensuite
- 1500mm stylus freestanding bath (with overflow)



**Builder Disclaimer:**

This brochure is a guide only. Refer to quote or contract documentation for specific details. Standard inclusions are subject to availability and Karston Building Group reserves the right to alter the inclusions without notice. Speak to a New Home Consultant for more information.

**Developer Disclaimer:**

This brochure is not a contract and is not binding. The information it contains does not constitute investment, legal, business, tax or other advice and has been prepared without reference to the investment objectives, financial situation, tax position or particular needs of any person. You should consult your professional adviser for legal, business or tax advice. Photos, maps, plans, drawings and descriptions are for illustration only and may differ from final built forms. While all reasonable care has been taken to ensure accuracy on publication, the information published may change from time to time to reflect changing circumstances, laws and regulations and without notice. Your contract of sale will set out all binding terms and up-to-date information. Prospective buyers should make and rely on their own enquiries and seek independent legal and financial advice before entering into any binding obligations. To the full extent permitted by law all liability is expressly excluded whether in negligence or otherwise, for any loss or damage in respect of, or arising from reliance on, this document.

DFC (Project Management) Pty Ltd ABN 83 161 448 139 is project manager for the Archer's Way estate.